

Deputy Clerk's Report

Actions and updates since the last Amenities Committee meeting on 24th February 2026.

Dog Signs at Cemetery

The dog signs have been passed to the Caretaker for him to add stakes for them to go into the ground. He will let me know when these are ready and I will go up to the Cemetery to position them around the places agreed.

Play Inspection Training

The Caretaker has agreed to understand Play Inspection Training in June along with Cllr Newton.

Bench on Marden Playing Field

I have contacted the resident who enquired after a having a bench on Marden Playing Field. There has been a delay due to his mother's health. They are also exploring having the bench in Marden Parish Church grounds. They appreciated us reaching out and will let us know their decision on the location in due course.

Tree Warden Report

Due to having some health issues, the Tree Warden was unable to conduct his report this Autumn/Winter. He often finds there is very little to say in the reports as nothing changes very much. He will see how things go over the year and will hopefully do a report in November.

Baby Changing Facilities

These are to be ordered shortly with the Clerk and we will be discussing installation with the Caretaker.

Southons Field Events 2026

Rugby Taggers every Saturday between 9.30am and 10.30am

Saturday 23rd May – Marden Motor Show

Sunday 31st May – Russet Runners 10K Event

Thursday 18th June – Rude Mechanicals Event

Sunday 28th June – Marden in Bloom – Garden Safari

Friday 17th July – Marden Primary Academy – Year 6 Leavers Event

Saturday 5th September – Marden in Bloom – Scarecrow Safari



the **play inspection** company

Annual Inspection

Marden Parish Council

Marden Playing Field

Church Green, Marden, Kent - Postcode is for Rookery
Court, TN12 9AZ



API Associate



Unit 5, Glenmore Business Park, Blackhill Road, Poole, Dorset, BH16 6NL
t- 01202 590675 e- info@playinspections.co.uk

[www. playinspections .co.uk](http://www.playinspections.co.uk)

Inspection Scope for RPII Inspection Methodology

This document outlines the RPII scope for inspections undertaken by the Inspectors listed as Annual Inspectors on the RPII Register of Inspectors when undertaking Indoor Annual, Outdoor Annual, Outdoor Operational and Outdoor Routine inspections.

Inspections are undertaken with reference to the standards listed in this preamble only; where no date for the standard is given it will be the standard that is current at the time of inspection except where overlap periods are granted by the standards committee when standards are updated. The information contained in reports is provided to assist the owner/operator in fulfilling their responsibilities as detailed in the relevant standard. Other standards referenced within the listed standards do not form part of the inspection, unless they are also explicitly listed here.

The following standards are relevant to all installations of equipment that are publicly accessible to users; this includes public parks, pay and play parks, schools, nurseries, public houses, holiday parks, indoor play centres, farm parks etc. All equipment used or employed in publicly accessible areas should meet with the requirements of the relevant standards (listed below):

BS EN 1176 Parts 1, 2, 3, 4, 5, 6, 10 & 11 Playground equipment intended for permanent installation outdoors & indoors.

BS EN 1176 Part 7 - 'Guidance on Installation, Inspection, Maintenance and Operation' (this document gives guidance to the owners/operators of the facility on the installation, inspection, maintenance and operation of playground equipment, excluding ancillary items).

In the United Kingdom the National Foreword forms an important part to the understanding and implementation of the recommendations set out in this document. It clarifies the application of the document within the UK as best practice guidance, as the document has been used since its initial publication. Therefore, in the UK this standard (BS EN 1176 – Part 7) contains no requirements and needs to be read and implemented as guidance, with the use of the term 'shall' therefore becoming a recommendation, as in the term 'should'.

Domestic play equipment falls outside of the scope of BS EN 1176 and has its own standards (BS EN 71 series – Safety of Toys). Where domestic equipment can be identified this will be acknowledged in the report but any comments concerning compliance will follow the requirements and recommendations of BS EN 1176.

When water play items, including spray parks, are inspected any comments concerning compliance within the inspection will refer to BS EN 1176. We have not assessed these against the requirements of BS EN 17232 (Water play equipment and features).

Other equipment that is not clearly identified as unsupervised or domestic (natural play, self-build equipment etc.) will be assessed for compliance with the relevant standard listed below:

- BS EN 15312** Free access multi-sports equipment
- BS EN 14974** Skateparks
- BS EN 16630** Permanently installed outdoor fitness equipment
- BS EN 16899** Parkour equipment (plus RPII/API guidance notes)

Annual and Post Installation inspections will take into consideration compliance with these current standards, and defects related to wear and vandalism. Items not listed in the report have not been included in the inspection. The inspection will cover the playground equipment and the active area (that area which is obviously part of the playground), nominally up to three metres around, the fence line if closer, or other areas as agreed.

Operational inspections only take into consideration defects related to cleanliness, equipment ground clearances, ground surface finishes, exposed foundations, sharp edges, missing parts, excessive wear (of moving parts) structural integrity, wear and vandalism.

Routine visual inspections relate only to the most obvious defects such as broken or missing parts, litter, vandalism and issues created by severe weather conditions (the intention is to identify hazards created by storm damage).

All inspections are non-dismantling, non-destructive and do not include any structural, toxicology or impact assessments defined in the standard; however, the inspector will undertake a manual test for stability and if equipment fails under manual load, or any other hazard is identified as an unacceptable risk, the owner/operator will be notified as soon as practicably possible.

The inspector will access all reasonably accessible equipment and will assess all reasonably accessible parts above the standing surface. Where it is not possible to access parts of the equipment without employing an alternative means of access the report will record the action required by the owner/operator to ensure the continued safe use of the equipment.

Ancillary equipment will be assessed using the inspector's knowledge and experience of the standards named in this document. (Note: Ancillary items are not included in the specific equipment-type parts of the EN 1176 series; hence they are not assessed for compliance with EN 1176 series and are subject to a general safety assessment).

The owner/operator is responsible for the overall safety of the equipment and area.

The inspector will not undertake any of the following works unless specifically agreed in writing at the time of order:

Checking the depth and underlying structural integrity of any surface areas and/or carrying out any testing of the impact attenuating properties of any surfaces; the identification of any corrosion, rot or other deterioration in any apparatus or equipment other than by an external inspection; the inspection of any equipment (or part thereof) that is beneath the playing surface (loose-fill materials may be moved to expose foundations); tightening any bolts, hinges or other fixing devices on any apparatus or equipment; assessing or inspecting any electrical installations contained on any site and/or apparatus and/or equipment; assessing or inspecting any water supplies and/or water features and/or any associated computerised systems (including carrying out any programming); where planting or trees are mentioned in the report no assessments of toxicity, suitability or condition are undertaken – the owner/operator should have suitable inspections provided by a competent person.

The owner/operator should have a 'design risk assessment' provided by the manufacturer/designer of the area for the equipment and location in which the facility is installed.

The operator is responsible for managing risks of their provision and is required by law to carry out a 'suitable and sufficient assessment' of the risks associated with a site or activity. This inspection shall be considered as contributing to the operator's discharge of this responsibility.

The details contained within the report are a snapshot of the condition at the time of inspection only and subsequent events may affect the condition of the facility. Suggested remedial actions are based on the knowledge and experience of the inspector and/or that of the inspection company. The owner/operator should always seek the advice of the manufacturer or a competent person when undertaking repairs and/or modifications to equipment.

A full copy of the Play Inspection Company Ltd. Terms & Conditions is available on our website (www.playinspections.co.uk)

The operator is responsible for following the guidance of the relevant standards. The standards give guidance on the installation, inspection, maintenance and operation of the various types of facilities. The inspection guidance is listed in Table 1, with an indication of which parts will be included in an RPII Annual or Post-Installation Inspection. The relevant standards also contain additional parts which the operator should follow.

Inspection recommendations of relevant standards Refer to relevant standards for full text	Annual Main	RPII Annual/ Post Installation Inspection
6.1 d) Overall levels of safety of equipment (see note 1)	✓	✓ [1]
6.1 d) Overall levels of safety of foundations (see note 1)	✓	✓ [1]
6.1 d) Overall levels of safety of playing surfaces (see note 2)	✓	✓ [2]
6.1 d) Compliance with the relevant parts of the standard and or risk assessment (see note 3)	✓	✓ [3]
6.1 d) Effects of weather	✓	✓
6.1 d) Presence of rot, decay or corrosion (see note 1)	✓	✓ [1]
6.1 d) Assessment of repairs made or added or replaced components (see note 4)	✓	✓ [4]
6.1 d) Excavation or dismantling/additional measures	✓	✗
6.2.1 Assessment of glass reinforced plastics (see note 5)	✓	✓ [5]
6.2.1 Inspection of one post equipment (see note 1)	✓	✓ [1]
6.2.4 Undertaking the Operators inspection protocol	✓	✗

NB: The clause numbers in table 1 are taken from BS EN 1176 - Part 7:2020. The content is equally applicable to all other relevant standards listed herein. Playgrounds contain a range of equipment from different manufacturers and installed over a number of years; operators should implement any guidance provided by the manufacturer. Item specific detail is not readily available to RPII Playground Inspectors, whose report contributes to the operator's overall Annual Main Inspection as detailed in the relevant standards.

[1] A manual test only is undertaken for stability. Wear and instability are only detectable where readily apparent without dismantling or destruction and without the use of tools, excavation or specialist equipment. Rot and corrosion are tested or with a hammer and/or steel rod. Decay in timber may exist which can only be found with specialist equipment.

[2] Only the visible condition and dimensional compliance of surface extent is considered. Neither testing of impact attenuating properties nor measurement of the thickness of bound surfaces are undertaken on RPII annual inspections.

[3] The inspection assesses compliance where this can be tested on site using manual methods without dismantling, destruction and without the use of tools or specialist equipment.

[4] The operator should use manufacturer's recommended parts, or equivalent. We are unable to verify if such parts have been used, and any subsequent change in quality or performance.

[5] Visible glass fibres will be noted in reports. The operator is responsible for repairs or replacement.

Risk Assessment Matrix

			Scores in the report are multiplication factors of Likelihood x Severity					
			Severity>>					
Likelihood	Very High probability, if the situation is not addressed an accident is almost certain.	5	Very High	VL (5)	L (10)	M (15)	H (20)	VH (25)
	High probability an accident is probable without any added factor.	4	High	VL (4)	L (8)	M (12)	H (16)	H (20)
	Moderate probability an incident is foreseeable.	3	Moderate	VL (3)	L (6)	L (9)	M (12)	M (15)
	Some probability, requires a combination of factors to take place.	2	Low	VL (2)	VL (4)	L (6)	L (8)	L (10)
	No significant probability; lightning strike, freak accident.	1	Very Low	VL (1)	VL (2)	VL (3)	VL (4)	VL (5)
			Very Low	Low	Moderate	High	Very High	
			1	2	3	4	5	
			No injury likely e.g. damaged or soiled clothing, minor bruising, grazes	Minor injury, laceration or bruising requiring first aid only	Injury requiring medical intervention e.g. cuts requiring stitches	Serious injury including concussions or fracture of long bones	Severe injury involving a potential life changing injury or fatality	
			Severity>>					
<p>Note 1: The total risk scores included within our reports are a multiplication factor of the calculated Likelihood and Severity of each finding. Both Likelihood and Severity are given a number between 1 - 5 as shown on the matrix above and these two numbers are then multiplied together to give the total risk score that is shown against defects on the report. Total risk scores can be divided in both directions, i.e. a total risk score of 12 could be a Likelihood (3) x Severity (4) or Likelihood (4) x Severity (3).</p> <p>Note 2: When we inspect we only see a snapshot of the current condition of the equipment. It is the operators responsibility to ensure that there is a continuing level of maintenance to keep the equipment in good working order and the site fit for use.</p>								

Equipment has been assessed to the following standards where relevant:

- BS EN 1176 Parts 1-11 (Playground equipment and surfacing)
- BS EN 14974 (Facilities for users of roller sports equipment)
- BS EN 15312 (Free access multi-sports equipment)
- BS EN 16899 (Parkour Equipment)
- BS EN 16630 (Outdoor Fitness Equipment).

Marden Playing Field

Inspection Ref: 2959987

Site Ref: 24007

Inspected: 20-January-2026 - 14:12 by James Pyke (RPII Annual inspector)

Risk Assessment: 10 Low Risk

**Location:**

The area is covered by CCTV cameras

Disabled Access:

Some accessible features; an area that presents difficulties to the majority of people with disabilities but in favourable circumstances and certainly in partnership can be accessed.

i 8 - Low Risk

Item: Site General
Manufacturer: Owner/Operator
Surface Type: N/A
Item Quantity: 1
Equipment Compliance: N/A
Surface Area Compliance: N/A

Total Findings: 3



Finding 1

There is weed / vegetation growth within the surface - Remove weed / vegetation growth

Finding 2

There are trip hazards at the edges of the surface - Remove trip hazard

Finding 3

There are gaps opening between the surfacing and the edging surround or between the joints in the surfacing - Monitor for any further deterioration and repair as required

i 8 - Low Risk

Item: Gate - Self Closing
Manufacturer: Not Identified
Surface Type: Mixed Surface
Item Quantity: 2
Equipment Compliance: N/A
Surface Area Compliance: N/A

Total Findings: 5



Finding 1

The gate is not operating correctly - Take effective action to ensure the gate closes between 4 and 8 seconds

Finding 2

There are openings that are less than 12mm that could trap or crush fingers - Provide a 12mm gap throughout full range of motion at both sides of gate

Finding 3

The paint is flaking off the metalwork - Rub down and re-paint

Finding 4

The gate is closing too quickly (less than 4 seconds) - Take corrective action to ensure that the gate closes in 4-8 seconds from 90 degrees

Finding 5

The area around the item has eroded and may become slippery - Reinstate eroded area

i 6 - Low Risk

Item: Gate - Maintenance
Manufacturer: Not Identified
Surface Type: Grass
Item Quantity: 1
Equipment Compliance: N/A
Surface Area Compliance: N/A



Total Findings: 2

Finding 1

The maintenance gate was correctly padlocked at the time of inspection, however this means that the inspector was unable to fully assess the gate - Ensure that there are 12mm gaps throughout the full range of motion on gate/s and between leaves where relevant

Finding 2

The gate has no drop bolt sleeves and/or drop bolts fitted - Provide drop bolt sleeves and/or drop bolts

i 6 - Low Risk

Item: Fence - Bow Top
Manufacturer: Not Identified
Surface Type: Grass
Item Quantity: 1
Equipment Compliance: N/A
Surface Area Compliance: N/A



Total Findings: 1

Finding 1

There is some damage to the fence sections - Monitor for any further deterioration and repair as required

i 4 - Very Low Risk

Item: Sign
Manufacturer: Not Identified
Surface Type: N/A
Item Quantity: 1
Equipment Compliance: N/A
Surface Area Compliance: N/A



Total Findings: 1

Finding 1

This item is satisfactory - no work required -

i 6 - Low Risk

Item: Bench
Manufacturer: Not Identified
Surface Type: Concrete
Item Quantity: 3
Equipment Compliance: N/A
Surface Area Compliance: N/A



Total Findings: 1

Finding 1

The paintwork on this item has been damaged or worn exposing the metal underneath which is rusting / corroding - Treat affected areas and repaint

i 4 - Very Low Risk

Item: Litter Bin
Manufacturer: Wicksteed Playgrounds
Surface Type: Grass
Item Quantity: 1
Equipment Compliance: N/A
Surface Area Compliance: N/A



Total Findings: 1

Finding 1

This item is satisfactory - no work required -

i 10 - Low Risk

Item: Basket Swing - Type 1
Manufacturer: Park Leisure Ltd
Surface Type: Wet Pour
Item Quantity: 1
Equipment Compliance: No
Surface Area Compliance: Yes
Life Expectancy: >10 Years
Total Findings: 7



Finding 1

The seat is severely damaged and requires replacing -
 Replace damaged seat

Finding 2

The seat/s is / are too close to the frame as defined in BS EN 1176 Part 2 - Monitor - No action given the risk assessment

Finding 3

There is some notable evidence of chain wear - Monitor for any further deterioration and replace when 40% worn

Finding 4

There is some wear to the shackles. - Monitor for any further deterioration and replace when 40% worn

Finding 5

The swing seat connectors have some wear present - Monitor for further deterioration and replace when 40% worn

Finding 6

The bush / bushes is / are showing signs of wear - Monitor for any further deterioration and replace as required

Finding 7

The split pins are missing from the shackles - Insert split pins to secure the shackles

i 8 - Low Risk

Item: 2 Bay 2 Flat 2 Cradle
Manufacturer: Park Leisure Ltd
Surface Type: Wet Pour
Item Quantity: 1
Equipment Compliance: No
Surface Area Compliance: Yes
Life Expectancy: >10 Years
Total Findings: 10



Finding 1

The chain openings are in excess of the 8.6mm as recommended by BS EN 1176 - Monitor - No action given the risk assessment

Finding 2

The seat/s is / are too close to the frame as defined in BS EN 1176 Part 2 - Monitor - No action given the risk assessment

Finding 3

There is some notable evidence of chain wear - Monitor for any further deterioration and replace when 40% worn

Finding 4

There is some wear to the shackles. - Monitor for any further deterioration and replace when 40% worn

Finding 5

The bush / bushes is / are showing signs of wear - Monitor for any further deterioration and replace as required

Finding 6

The seat has minor damage or wear - Monitor for any further deterioration and replace as required

Finding 7

The swing seat connectors are loose - Tighten to secure

Finding 8

The fixings have corroded excessively - Replace all corroded fixings

Finding 9

The paintwork on this item has been damaged or worn exposing the metal underneath which is rusting / corroding - Treat affected areas and repaint

Finding 10

There is some minor damage to the surface - Monitor for any further deterioration and repair as required

i 8 - Low Risk

Item: Multi Play (Junior)
Manufacturer: Park Leisure Ltd
Surface Type: Wet Pour
Item Quantity: 1
Equipment Compliance: No
Surface Area Compliance: No
Life Expectancy: 5 -10 Years
Total Findings: 11



Finding 1

The surfacing dimensions are short and do not meet with the requirements of the current applicable standard - Monitor - No action given the risk assessment

Finding 2

This item has no slide bar fitted as required by BS EN 1176 Part 3 - Monitor use and consider the provision of a slide bar

Finding 3

There are a number of dents in the slide surface - Monitor for any further deterioration and repair as required

Finding 4

There is/are bolt cap covers missing or damaged on the item - Replace missing or damaged bolt cap covers

Finding 5

There is/are inserts missing - Replace missing inserts

Finding 6

There is/are finger entrapment/s in the top of the climbing wall and the item fails to meet the requirements of BS EN 1176 Part 1 4.2.7.6 Entrapment of fingers - Adjust to remove the entrapment

Finding 7

There is algae or moss on the surface of the equipment - Clean and treat appropriately

Finding 8

The bushes are worn or missing causing the fixing lugs to wear - Replace worn or missing bushes

Finding 9

There is some graffiti present - Remove the graffiti

Finding 10

There is some evidence of rot in the timber - Monitor for any further deterioration and replace as required

Finding 11

The paintwork on this item has been damaged or worn exposing the metal underneath which is rusting / corroding - Treat affected areas and repaint

i 6 - Low Risk

Item: Inclusive Roundabout
Manufacturer: Park Leisure Ltd
Surface Type: Wet Pour
Item Quantity: 1
Equipment Compliance: Yes
Surface Area Compliance: No
Life Expectancy: 5 -10 Years
Total Findings: 2



Finding 1

The surfacing dimensions are short and do not meet with the requirements of the current applicable standard - Monitor - No action given the risk assessment

Finding 2

There are gaps opening between the surfacing and the edging surround or between the joints in the surfacing - Monitor for any further deterioration and repair as required

i 6 - Low Risk

Item: Rocking Horse
Manufacturer: Wicksteed Playgrounds
Surface Type: Grass
Item Quantity: 1
Equipment Compliance: No
Surface Area Compliance: Yes
Life Expectancy: 5 -10 Years
Total Findings: 2



Finding 1

There is no gaiter protection for accessible moving parts (possible shear trap) as recommended in BS EN 1176 Part 1; 4.2.6 Moving Parts - Monitor - No action given the risk assessment

Finding 2

Parts of the timber are rough or splintered - Remove all rough or sharp edges

i 6 - Low Risk

Item: Spinner Bowl
Manufacturer: Not Identified
Surface Type: Wet Pour
Item Quantity: 1
Equipment Compliance: Yes
Surface Area Compliance: Yes
Life Expectancy: 5 -10 Years
Total Findings: 2



Finding 1

The paint is flaking off the metalwork - Rub down and re-paint

Finding 2

There is some graffiti present - Remove the graffiti

i 8 - Low Risk

Item: Overhead Rotator
Manufacturer: Wicksteed Playgrounds
Surface Type: Wet Pour
Item Quantity: 1
Equipment Compliance: Yes
Surface Area Compliance: Yes
Life Expectancy: 5 -10 Years
Total Findings: 1



Finding 1

This item is satisfactory - no work required -

i 8 - Low Risk

Item: Goal End
Manufacturer: Wicksteed Playgrounds
Surface Type: Bitmac
Item Quantity: 1
Equipment Compliance: No
Surface Area Compliance: N/A
Life Expectancy: >10 Years
Total Findings: 4



Finding 1

A clearly visible facility sign should be provided in a prominent position with the wording as detailed BS EN 15312- the equipment is not intended for children less than 3 years old- the warning - Do not climb on the framework or nets- the warning - Do not hang on the ring (if provided)- the warning - Do not wear rings or other jewellery- name and telephone number of the administrator- number to call in case of accident - Provide signage to BS EN 15312

Finding 2

There is/are finger entrapments in the framework and the item fails to meet the requirements of BS EN 15312 Clause 4.4.2.2 Entrapment of fingers - Monitor - No action given the risk assessment

Finding 3

The paint is flaking off the metalwork - Rub down and re-paint

Finding 4

There is algae, silt or moss growth on the surface resulting in slippery conditions - Clean and treat appropriately

i 8 - Low Risk

Item: Shelter
Manufacturer: Not Identified
Surface Type: Concrete
Item Quantity: 1
Equipment Compliance: N/A
Surface Area Compliance: N/A



Total Findings: 4

Finding 1

The item has been damaged - Monitor for any further deterioration and replace as required

Finding 2

There is some evidence of fire damage to the item - Monitor for any further deterioration and repair as required

Finding 3

There is or are fixings missing on the item - Replace all missing fixings

Finding 4

There is some graffiti present - Remove the graffiti

i 4 - Very Low Risk

Item: Sign
Manufacturer: Wicksteed Playgrounds
Surface Type: Grass
Item Quantity: 1
Equipment Compliance: N/A
Surface Area Compliance: N/A



Total Findings: 1

Finding 1

This item is satisfactory - no work required -

i 8 - Low Risk

Item: Cross Trainer
Manufacturer: Wicksteed Playgrounds
Surface Type: Grass Matrix Tiles
Item Quantity: 1
Equipment Compliance: Yes
Surface Area Compliance: Yes
Life Expectancy: 5 -10 Years
Total Findings: 4



Finding 1

The instruction label provided has faded; an instruction label should be provided with each item of equipment in accordance with the requirements of BS EN 16630 - Provide appropriate instruction label/s

Finding 2

There is or are fixings missing on the item - Replace all missing fixings

Finding 3

There is/are inserts missing - Replace missing inserts

Finding 4

The bearing is showing signs of wear - Monitor for any further deterioration and replace as required

i 8 - Low Risk

Item: Chest Press
Manufacturer: Wicksteed Playgrounds
Surface Type: Grass Matrix Tiles
Item Quantity: 1
Equipment Compliance: Yes
Surface Area Compliance: Yes
Life Expectancy: 5 -10 Years
Total Findings: 1



Finding 1

This item is satisfactory - no work required -

i 4 - Very Low Risk

Item: Skier
Manufacturer: Wicksteed Playgrounds
Surface Type: Grass Matrix Tiles
Item Quantity: 1
Equipment Compliance: Yes
Surface Area Compliance: Yes
Life Expectancy: 5 -10 Years
Total Findings: 1



Finding 1

There is/are bolt cap covers missing or damaged on the item - Replace missing or damaged bolt cap covers

i 5 - Very Low Risk

Item: Cycle
Manufacturer: Wicksteed Playgrounds
Surface Type: Grass Matrix Tiles
Item Quantity: 1
Equipment Compliance: Yes
Surface Area Compliance: Yes
Life Expectancy: 5 -10 Years
Total Findings: 1



Finding 1

The instruction label provided has faded; an instruction label should be provided with each item of equipment in accordance with the requirements of BS EN 16630 - Provide appropriate instruction label/s

i 5 - Very Low Risk

Item: Air Walker
Manufacturer: Wicksteed Playgrounds
Surface Type: Grass Matrix Tiles
Item Quantity: 1
Equipment Compliance: Yes
Surface Area Compliance: Yes
Life Expectancy: 5 -10 Years
Total Findings: 1



Finding 1

There is no instruction label provided; an instruction label should be provided with each item of equipment in accordance with the requirements of BS EN 16630 - Provide appropriate instruction label/s

i 5 - Very Low Risk

Item: Tai Chi Wheels
Manufacturer: Wicksteed Playgrounds
Surface Type: Grass Matrix Tiles
Item Quantity: 1
Equipment Compliance: Yes
Surface Area Compliance: Yes
Life Expectancy: 5 -10 Years
Total Findings: 1



Finding 1

The instruction label provided has faded; an instruction label should be provided with each item of equipment in accordance with the requirements of BS EN 16630 - Provide appropriate instruction label/s

Findings information

6 - Low Risk (Finding 1)

Item: Ancillary Items - Site General
Manufacturer: Owner/Operator

Risk Level: L - Low Risk
Surface: N/A



Finding: There is weed / vegetation growth within the surface

Action: Remove weed / vegetation growth

8 - Low Risk (Finding 2)

Item: Ancillary Items - Site General
Manufacturer: Owner/Operator

Risk Level: L - Low Risk
Surface: N/A



Finding: There are trip hazards at the edges of the surface

Action: Remove trip hazard

i 6 - Low Risk (Finding 3)

Item: Ancillary Items - Site General
Manufacturer: Owner/Operator

Risk Level: L - Low Risk
Surface: N/A



Finding: There are gaps opening between the surfacing and the edging surround or between the joints in the surfacing
Action: Monitor for any further deterioration and repair as required

i 5 - Very Low Risk (Finding 1)

Item: Gates - Gate - Self Closing
Manufacturer: Not Identified

Risk Level: V - Very Low Risk
Surface: Mixed Surface



Finding: The gate is not operating correctly
Action: Take effective action to ensure the gate closes between 4 and 8 seconds

i 8 - Low Risk (Finding 2)

Item: Gates - Gate - Self Closing
Manufacturer: Not Identified

Risk Level: L - Low Risk
Surface: Mixed Surface



Finding: There are openings that are less than 12mm that could trap or crush fingers

Action: Provide a 12mm gap throughout full range of motion at both sides of gate

i 6 - Low Risk (Finding 3)

Item: Gates - Gate - Self Closing
Manufacturer: Not Identified

Risk Level: L - Low Risk
Surface: Mixed Surface



Finding: The paint is flaking off the metalwork

Action: Rub down and re-paint

i 8 - Low Risk (Finding 4)

Item: Gates - Gate - Self Closing
Manufacturer: Not Identified

Risk Level: L - Low Risk
Surface: Mixed Surface



Finding: The gate is closing too quickly (less than 4 seconds)

Action: Take corrective action to ensure that the gate closes in 4-8 seconds from 90 degrees

i 8 - Low Risk (Finding 5)

Item: Gates - Gate - Self Closing
Manufacturer: Not Identified

Risk Level: L - Low Risk
Surface: Mixed Surface



Finding: The area around the item has eroded and may become slippery

Action: Reinstate eroded area

i 0 - Risk Assessment not Undertaken (Finding 1)

Item: Gates - Gate - Maintenance
Manufacturer: Not Identified

Risk Level: N - Risk Assessment not Undertaken
Surface: Grass



Finding: The maintenance gate was correctly padlocked at the time of inspection, however this means that the inspector was unable to fully assess the gate

Action: Ensure that there are 12mm gaps throughout the full range of motion on gate/s and between leaves where relevant

i 6 - Low Risk (Finding 2)

Item: Gates - Gate - Maintenance
Manufacturer: Not Identified

Risk Level: L - Low Risk
Surface: Grass



Finding: The gate has no drop bolt sleeves and/or drop bolts fitted

Action: Provide drop bolt sleeves and/or drop bolts

i 6 - Low Risk (Finding 1)

Item: Fences - Fence - Bow Top
Manufacturer: Not Identified

Risk Level: L - Low Risk
Surface: Grass



Finding: There is some damage to the fence sections

Action: Monitor for any further deterioration and repair as required

i 6 - Low Risk (Finding 1)

Item: Ancillary Items - Bench
Manufacturer: Not Identified

Risk Level: L - Low Risk
Surface: Concrete



Finding: The paintwork on this item has been damaged or worn exposing the metal underneath which is rusting / corroding

Action: Treat affected areas and repaint

i 10 - Low Risk (Finding 1)

Item: Swings - Basket Swing - Type 1
Manufacturer: Park Leisure Ltd

Risk Level: L - Low Risk
Surface: Wet Pour



Finding: The seat is severely damaged and requires replacing

Action: Replace damaged seat

i 6 - Low Risk (Finding 2)

Item: Swings - Basket Swing - Type 1
Manufacturer: Park Leisure Ltd

Risk Level: L - Low Risk
Surface: Wet Pour



Finding: The seat/s is / are too close to the frame as defined in BS EN 1176 Part 2

Action: Monitor - No action given the risk assessment

i 6 - Low Risk (Finding 3)

Item: Swings - Basket Swing - Type 1
Manufacturer: Park Leisure Ltd

Risk Level: L - Low Risk
Surface: Wet Pour



Finding: There is some notable evidence of chain wear

Action: Monitor for any further deterioration and replace when 40% worn

i 6 - Low Risk (Finding 4)

Item: Swings - Basket Swing - Type 1
Manufacturer: Park Leisure Ltd

Risk Level: L - Low Risk
Surface: Wet Pour



Finding: There is some wear to the shackles.

Action: Monitor for any further deterioration and replace when 40% worn

i 6 - Low Risk (Finding 5)

Item: Swings - Basket Swing - Type 1
Manufacturer: Park Leisure Ltd

Risk Level: L - Low Risk
Surface: Wet Pour



Finding: The swing seat connectors have some wear present

Action: Monitor for further deterioration and replace when 40% worn

i 4 - Very Low Risk (Finding 6)

Item: Swings - Basket Swing - Type 1
Manufacturer: Park Leisure Ltd

Risk Level: V - Very Low Risk
Surface: Wet Pour



Finding: The bush / bushes is / are showing signs of wear

Action: Monitor for any further deterioration and replace as required

i 10 - Low Risk (Finding 7)

Item: Swings - Basket Swing - Type 1
Manufacturer: Park Leisure Ltd

Risk Level: L - Low Risk
Surface: Wet Pour



Finding: The split pins are missing from the shackles

Action: Insert split pins to secure the shackles

i 5 - Very Low Risk (Finding 1)

Item: Swings - 2 Bay 2 Flat 2 Cradle
Manufacturer: Park Leisure Ltd

Risk Level: V - Very Low Risk
Surface: Wet Pour



Finding: The chain openings are in excess of the 8.6mm as recommended by BS EN 1176

Action: Monitor - No action given the risk assessment

i 6 - Low Risk (Finding 2)

Item: Swings - 2 Bay 2 Flat 2 Cradle
Manufacturer: Park Leisure Ltd

Risk Level: L - Low Risk
Surface: Wet Pour



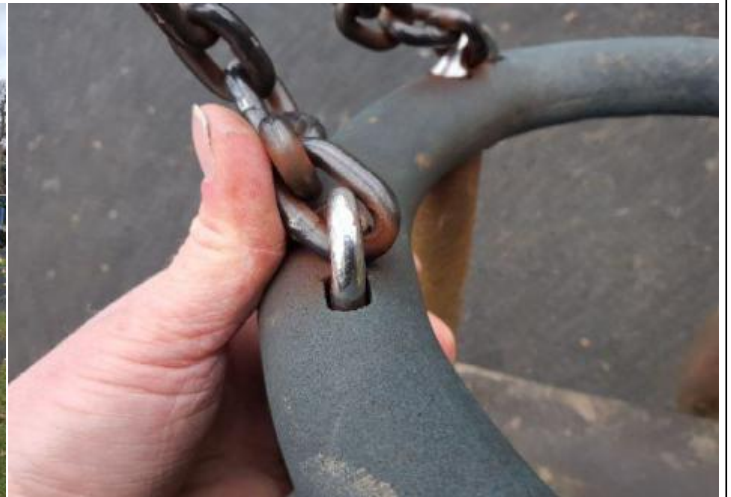
Finding: The seat/s is / are too close to the frame as defined in BS EN 1176 Part 2

Action: Monitor - No action given the risk assessment

i 6 - Low Risk (Finding 3)

Item: Swings - 2 Bay 2 Flat 2 Cradle
Manufacturer: Park Leisure Ltd

Risk Level: L - Low Risk
Surface: Wet Pour



Finding: There is some notable evidence of chain wear

Action: Monitor for any further deterioration and replace when 40% worn

i 6 - Low Risk (Finding 4)

Item: Swings - 2 Bay 2 Flat 2 Cradle
Manufacturer: Park Leisure Ltd

Risk Level: L - Low Risk
Surface: Wet Pour



Finding: There is some wear to the shackles.

Action: Monitor for any further deterioration and replace when 40% worn

i 4 - Very Low Risk (Finding 5)

Item: Swings - 2 Bay 2 Flat 2 Cradle
Manufacturer: Park Leisure Ltd

Risk Level: V - Very Low Risk
Surface: Wet Pour



Finding: The bush / bushes is / are showing signs of wear

Action: Monitor for any further deterioration and replace as required

i 6 - Low Risk (Finding 6)

Item: Swings - 2 Bay 2 Flat 2 Cradle
Manufacturer: Park Leisure Ltd

Risk Level: L - Low Risk
Surface: Wet Pour



Finding: The seat has minor damage or wear

Action: Monitor for any further deterioration and replace as required

i 6 - Low Risk (Finding 7)

Item: Swings - 2 Bay 2 Flat 2 Cradle
Manufacturer: Park Leisure Ltd

Risk Level: L - Low Risk
Surface: Wet Pour



Finding: The swing seat connectors are loose

Action: Tighten to secure

i 8 - Low Risk (Finding 8)

Item: Swings - 2 Bay 2 Flat 2 Cradle
Manufacturer: Park Leisure Ltd

Risk Level: L - Low Risk
Surface: Wet Pour



Finding: The fixings have corroded excessively

Action: Replace all corroded fixings

i 6 - Low Risk (Finding 9)

Item: Swings - 2 Bay 2 Flat 2 Cradle
Manufacturer: Park Leisure Ltd

Risk Level: L - Low Risk
Surface: Wet Pour



Finding: The paintwork on this item has been damaged or worn exposing the metal underneath which is rusting / corroding

Action: Treat affected areas and repaint

i 4 - Very Low Risk (Finding 10)

Item: Swings - 2 Bay 2 Flat 2 Cradle
Manufacturer: Park Leisure Ltd

Risk Level: V - Very Low Risk
Surface: Wet Pour



Finding: There is some minor damage to the surface

Action: Monitor for any further deterioration and repair as required

i 5 - Very Low Risk (Finding 1)

Item: Activity Equipment - Multi Play (Junior)
Manufacturer: Park Leisure Ltd

Risk Level: V - Very Low Risk
Surface: Wet Pour



Finding: The surfacing dimensions are short and do not meet with the requirements of the current applicable standard

Action: Monitor - No action given the risk assessment

i 8 - Low Risk (Finding 2)

Item: Activity Equipment - Multi Play (Junior)
Manufacturer: Park Leisure Ltd

Risk Level: L - Low Risk
Surface: Wet Pour



Finding: This item has no slide bar fitted as required by BS EN 1176 Part 3

Action: Monitor use and consider the provision of a slide bar

i 4 - Very Low Risk (Finding 3)

Item: Activity Equipment - Multi Play (Junior)
Manufacturer: Park Leisure Ltd

Risk Level: V - Very Low Risk
Surface: Wet Pour



Finding: There are a number of dents in the slide surface

Action: Monitor for any further deterioration and repair as required

i 4 - Very Low Risk (Finding 4)

Item: Activity Equipment - Multi Play (Junior)
Manufacturer: Park Leisure Ltd

Risk Level: V - Very Low Risk
Surface: Wet Pour



Finding: There is/are bolt cap covers missing or damaged on the item

Action: Replace missing or damaged bolt cap covers

i 4 - Very Low Risk (Finding 5)

Item: Activity Equipment - Multi Play (Junior)
Manufacturer: Park Leisure Ltd

Risk Level: V - Very Low Risk
Surface: Wet Pour



Finding: There is/are inserts missing

Action: Replace missing inserts

i 8 - Low Risk (Finding 6)

Item: Activity Equipment - Multi Play (Junior)
Manufacturer: Park Leisure Ltd

Risk Level: L - Low Risk
Surface: Wet Pour



Finding: There is/are finger entrapment/s in the top of the climbing wall and the item fails to meet the requirements of BS EN 1176 Part 1 4.2.7.6 Entrapment of fingers

Action: Adjust to remove the entrapment

i 8 - Low Risk (Finding 7)

Item: Activity Equipment - Multi Play (Junior)
Manufacturer: Park Leisure Ltd

Risk Level: L - Low Risk
Surface: Wet Pour



Finding: There is algae or moss on the surface of the equipment

Action: Clean and treat appropriately

i 8 - Low Risk (Finding 8)

Item: Activity Equipment - Multi Play (Junior)
Manufacturer: Park Leisure Ltd

Risk Level: L - Low Risk
Surface: Wet Pour



Finding: The bushes are worn or missing causing the fixing lugs to wear
Action: Replace worn or missing bushes

i 0 - Risk Assessment not Undertaken (Finding 9)

Item: Activity Equipment - Multi Play (Junior)
Manufacturer: Park Leisure Ltd

Risk Level: N - Risk Assessment not Undertaken
Surface: Wet Pour



Finding: There is some graffiti present
Action: Remove the graffiti

i 6 - Low Risk (Finding 10)

Item: Activity Equipment - Multi Play (Junior)
Manufacturer: Park Leisure Ltd

Risk Level: L - Low Risk
Surface: Wet Pour



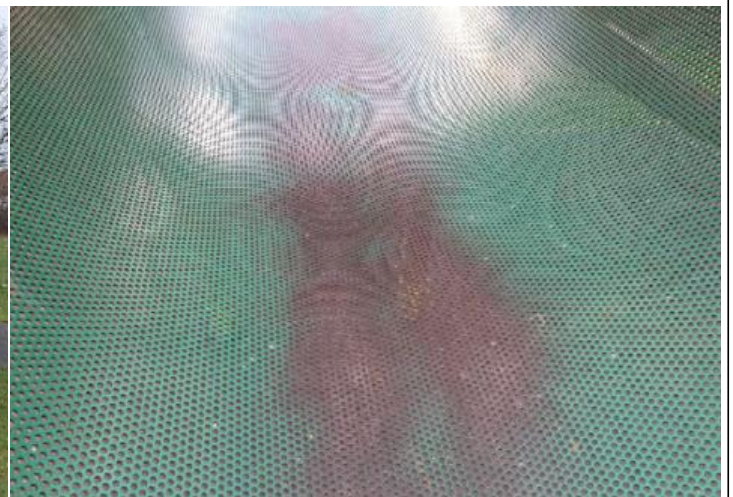
Finding: There is some evidence of rot in the timber

Action: Monitor for any further deterioration and replace as required

i 6 - Low Risk (Finding 11)

Item: Activity Equipment - Multi Play (Junior)
Manufacturer: Park Leisure Ltd

Risk Level: L - Low Risk
Surface: Wet Pour



Finding: The paintwork on this item has been damaged or worn exposing the metal underneath which is rusting / corroding

Action: Treat affected areas and repaint

i 5 - Very Low Risk (Finding 1)

Item: Rotor Play - Inclusive Roundabout
Manufacturer: Park Leisure Ltd

Risk Level: V - Very Low Risk
Surface: Wet Pour



Finding: The surfacing dimensions are short and do not meet with the requirements of the current applicable standard

Action: Monitor - No action given the risk assessment

i 6 - Low Risk (Finding 2)

Item: Rotor Play - Inclusive Roundabout
Manufacturer: Park Leisure Ltd

Risk Level: L - Low Risk
Surface: Wet Pour



Finding: There are gaps opening between the surfacing and the edging surround or between the joints in the surfacing

Action: Monitor for any further deterioration and repair as required

i 5 - Very Low Risk (Finding 1)

Item: Rocking Equipment - Rocking Horse
Manufacturer: Wicksteed Playgrounds

Risk Level: V - Very Low Risk
Surface: Grass



Finding: There is no gaiter protection for accessible moving parts (possible shear trap) as recommended in BS EN 1176 Part 1; 4.2.6 Moving Parts

Action: Monitor - No action given the risk assessment

i 6 - Low Risk (Finding 2)

Item: Rocking Equipment - Rocking Horse
Manufacturer: Wicksteed Playgrounds

Risk Level: L - Low Risk
Surface: Grass



Finding: Parts of the timber are rough or splintered

Action: Remove all rough or sharp edges

i 6 - Low Risk (Finding 1)

Item: Rotor Play - Spinner Bowl
Manufacturer: Not Identified

Risk Level: L - Low Risk
Surface: Wet Pour



Finding: The paint is flaking off the metalwork

Action: Rub down and re-paint

i 0 - Risk Assessment not Undertaken (Finding 2)

Item: Rotor Play - Spinner Bowl
Manufacturer: Not Identified

Risk Level: N - Risk Assessment not Undertaken
Surface: Wet Pour



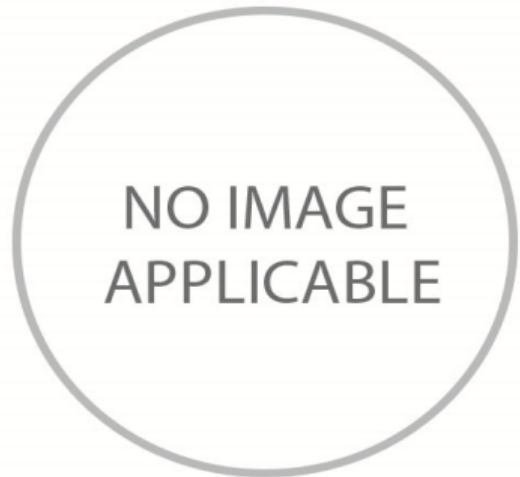
Finding: There is some graffiti present

Action: Remove the graffiti

i 5 - Very Low Risk (Finding 1)

Item: Multi Use Games Area - Goal End
Manufacturer: Wicksteed Playgrounds

Risk Level: V - Very Low Risk
Surface: Bitmac



Finding: A clearly visible facility sign should be provided in a prominent position with the wording as detailed BS EN 15312- the equipment is not intended for children less than 3 years old- the warning - Do not climb on the framework or nets- the warning - Do not hang on the ring (if provided)- the warning - Do not wear rings or other jewellery- name and telephone number of the administrator- number to call in case of accident

Action: Provide signage to BS EN 15312

i 5 - Very Low Risk (Finding 2)

Item: Multi Use Games Area - Goal End
Manufacturer: Wicksteed Playgrounds

Risk Level: V - Very Low Risk
Surface: Bitmac



Finding: There is/are finger entrapments in the framework and the item fails to meet the requirements of BS EN 15312 Clause 4.4.2.2 Entrapment of fingers

Action: Monitor - No action given the risk assessment

i 6 - Low Risk (Finding 3)

Item: Multi Use Games Area - Goal End
Manufacturer: Wicksteed Playgrounds

Risk Level: L - Low Risk
Surface: Bitmac



Finding: The paint is flaking off the metalwork

Action: Rub down and re-paint

i 8 - Low Risk (Finding 4)

Item: Multi Use Games Area - Goal End
Manufacturer: Wicksteed Playgrounds

Risk Level: L - Low Risk
Surface: Bitmac



Finding: There is algae, silt or moss growth on the surface resulting in slippery conditions

Action: Clean and treat appropriately

i 6 - Low Risk (Finding 1)

Item: Ancillary Items - Shelter
Manufacturer: Not Identified

Risk Level: L - Low Risk
Surface: Concrete



Finding: The item has been damaged

Action: Monitor for any further deterioration and replace as required

i 6 - Low Risk (Finding 2)

Item: Ancillary Items - Shelter
Manufacturer: Not Identified

Risk Level: L - Low Risk
Surface: Concrete



Finding: There is some evidence of fire damage to the item **Action:** Monitor for any further deterioration and repair as required

i 8 - Low Risk (Finding 3)

Item: Ancillary Items - Shelter
Manufacturer: Not Identified

Risk Level: L - Low Risk
Surface: Concrete



Finding: There is or are fixings missing on the item

Action: Replace all missing fixings

i 0 - Risk Assessment not Undertaken (Finding 4)

Item: Ancillary Items - Shelter
Manufacturer: Not Identified

Risk Level: N - Risk Assessment not Undertaken
Surface: Concrete



Finding: There is some graffiti present

Action: Remove the graffiti

i 5 - Very Low Risk (Finding 1)

Item: Outdoor Fitness Equipment - Cross Trainer
Manufacturer: Wicksteed Playgrounds

Risk Level: V - Very Low Risk
Surface: Grass Matrix Tiles



Finding: The instruction label provided has faded; an instruction label should be provided with each item of equipment in accordance with the requirements of BS EN 16630

Action: Provide appropriate instruction label/s

i 8 - Low Risk (Finding 2)

Item: Outdoor Fitness Equipment - Cross Trainer **Risk Level:** L - Low Risk
Manufacturer: Wicksteed Playgrounds **Surface:** Grass Matrix Tiles



Finding: There is or are fixings missing on the item

Action: Replace all missing fixings

i 4 - Very Low Risk (Finding 3)

Item: Outdoor Fitness Equipment - Cross Trainer **Risk Level:** V - Very Low Risk
Manufacturer: Wicksteed Playgrounds **Surface:** Grass Matrix Tiles



Finding: There is/are inserts missing

Action: Replace missing inserts

i 6 - Low Risk (Finding 4)

Item: Outdoor Fitness Equipment - Cross Trainer **Risk Level:** L - Low Risk
Manufacturer: Wicksteed Playgrounds **Surface:** Grass Matrix Tiles



Finding: The bearing is showing signs of wear **Action:** Monitor for any further deterioration and replace as required

i 4 - Very Low Risk (Finding 1)

Item: Outdoor Fitness Equipment - Skier **Risk Level:** V - Very Low Risk
Manufacturer: Wicksteed Playgrounds **Surface:** Grass Matrix Tiles



Finding: There is/are bolt cap covers missing or damaged on the item **Action:** Replace missing or damaged bolt cap covers

i 5 - Very Low Risk (Finding 1)

Item: Outdoor Fitness Equipment - Cycle
Manufacturer: Wicksteed Playgrounds

Risk Level: V - Very Low Risk
Surface: Grass Matrix Tiles



Finding: The instruction label provided has faded; an instruction label should be provided with each item of equipment in accordance with the requirements of BS EN 16630

Action: Provide appropriate instruction label/s

i 5 - Very Low Risk (Finding 1)

Item: Outdoor Fitness Equipment - Air Walker
Manufacturer: Wicksteed Playgrounds

Risk Level: V - Very Low Risk
Surface: Grass Matrix Tiles



Finding: There is no instruction label provided; an instruction label should be provided with each item of equipment in accordance with the requirements of BS EN 16630

Action: Provide appropriate instruction label/s

i 5 - Very Low Risk (Finding 1)

Item: Outdoor Fitness Equipment - Tai Chi Wheels
Manufacturer: Wicksteed Playgrounds

Risk Level: V - Very Low Risk
Surface: Grass Matrix Tiles



Finding: The instruction label provided has faded; an instruction label should be provided with each item of equipment in accordance with the requirements of BS EN 16630

Action: Provide appropriate instruction label/s



the **play inspection** company

Annual Inspection

Marden Parish Council

Napoleon Drive Play Area

Access from the Playing Field, Napoleon Drive, Marden,
Tonbridge, TN12 9TR



API Associate



Unit 5, Glenmore Business Park, Blackhill Road, Poole, Dorset, BH16 6NL
t- 01202 590675 e- info@playinspections.co.uk

[www. playinspections .co.uk](http://www.playinspections.co.uk)

Inspection Scope for RPII Inspection Methodology

This document outlines the RPII scope for inspections undertaken by the Inspectors listed as Annual Inspectors on the RPII Register of Inspectors when undertaking Indoor Annual, Outdoor Annual, Outdoor Operational and Outdoor Routine inspections.

Inspections are undertaken with reference to the standards listed in this preamble only; where no date for the standard is given it will be the standard that is current at the time of inspection except where overlap periods are granted by the standards committee when standards are updated. The information contained in reports is provided to assist the owner/operator in fulfilling their responsibilities as detailed in the relevant standard. Other standards referenced within the listed standards do not form part of the inspection, unless they are also explicitly listed here.

The following standards are relevant to all installations of equipment that are publicly accessible to users; this includes public parks, pay and play parks, schools, nurseries, public houses, holiday parks, indoor play centres, farm parks etc. All equipment used or employed in publicly accessible areas should meet with the requirements of the relevant standards (listed below):

BS EN 1176 Parts 1, 2, 3, 4, 5, 6, 10 & 11 Playground equipment intended for permanent installation outdoors & indoors.

BS EN 1176 Part 7 - 'Guidance on Installation, Inspection, Maintenance and Operation' (this document gives guidance to the owners/operators of the facility on the installation, inspection, maintenance and operation of playground equipment, excluding ancillary items).

In the United Kingdom the National Foreword forms an important part to the understanding and implementation of the recommendations set out in this document. It clarifies the application of the document within the UK as best practice guidance, as the document has been used since its initial publication. Therefore, in the UK this standard (BS EN 1176 – Part 7) contains no requirements and needs to be read and implemented as guidance, with the use of the term 'shall' therefore becoming a recommendation, as in the term 'should'.

Domestic play equipment falls outside of the scope of BS EN 1176 and has its own standards (BS EN 71 series – Safety of Toys). Where domestic equipment can be identified this will be acknowledged in the report but any comments concerning compliance will follow the requirements and recommendations of BS EN 1176.

When water play items, including spray parks, are inspected any comments concerning compliance within the inspection will refer to BS EN 1176. We have not assessed these against the requirements of BS EN 17232 (Water play equipment and features).

Other equipment that is not clearly identified as unsupervised or domestic (natural play, self-build equipment etc.) will be assessed for compliance with the relevant standard listed below:

- BS EN 15312** Free access multi-sports equipment
- BS EN 14974** Skateparks
- BS EN 16630** Permanently installed outdoor fitness equipment
- BS EN 16899** Parkour equipment (plus RPII/API guidance notes)

Annual and Post Installation inspections will take into consideration compliance with these current standards, and defects related to wear and vandalism. Items not listed in the report have not been included in the inspection. The inspection will cover the playground equipment and the active area (that area which is obviously part of the playground), nominally up to three metres around, the fence line if closer, or other areas as agreed.

Operational inspections only take into consideration defects related to cleanliness, equipment ground clearances, ground surface finishes, exposed foundations, sharp edges, missing parts, excessive wear (of moving parts) structural integrity, wear and vandalism.

Routine visual inspections relate only to the most obvious defects such as broken or missing parts, litter, vandalism and issues created by severe weather conditions (the intention is to identify hazards created by storm damage).

All inspections are non-dismantling, non-destructive and do not include any structural, toxicology or impact assessments defined in the standard; however, the inspector will undertake a manual test for stability and if equipment fails under manual load, or any other hazard is identified as an unacceptable risk, the owner/operator will be notified as soon as practicably possible.

The inspector will access all reasonably accessible equipment and will assess all reasonably accessible parts above the standing surface. Where it is not possible to access parts of the equipment without employing an alternative means of access the report will record the action required by the owner/operator to ensure the continued safe use of the equipment.

Ancillary equipment will be assessed using the inspector's knowledge and experience of the standards named in this document. (Note: Ancillary items are not included in the specific equipment-type parts of the EN 1176 series; hence they are not assessed for compliance with EN 1176 series and are subject to a general safety assessment).

The owner/operator is responsible for the overall safety of the equipment and area.

The inspector will not undertake any of the following works unless specifically agreed in writing at the time of order:

Checking the depth and underlying structural integrity of any surface areas and/or carrying out any testing of the impact attenuating properties of any surfaces; the identification of any corrosion, rot or other deterioration in any apparatus or equipment other than by an external inspection; the inspection of any equipment (or part thereof) that is beneath the playing surface (loose-fill materials may be moved to expose foundations); tightening any bolts, hinges or other fixing devices on any apparatus or equipment; assessing or inspecting any electrical installations contained on any site and/or apparatus and/or equipment; assessing or inspecting any water supplies and/or water features and/or any associated computerised systems (including carrying out any programming); where planting or trees are mentioned in the report no assessments of toxicity, suitability or condition are undertaken – the owner/operator should have suitable inspections provided by a competent person.

The owner/operator should have a 'design risk assessment' provided by the manufacturer/designer of the area for the equipment and location in which the facility is installed.

The operator is responsible for managing risks of their provision and is required by law to carry out a 'suitable and sufficient assessment' of the risks associated with a site or activity. This inspection shall be considered as contributing to the operator's discharge of this responsibility.

The details contained within the report are a snapshot of the condition at the time of inspection only and subsequent events may affect the condition of the facility. Suggested remedial actions are based on the knowledge and experience of the inspector and/or that of the inspection company. The owner/operator should always seek the advice of the manufacturer or a competent person when undertaking repairs and/or modifications to equipment.

A full copy of the Play Inspection Company Ltd. Terms & Conditions is available on our website (www.playinspections.co.uk)

The operator is responsible for following the guidance of the relevant standards. The standards give guidance on the installation, inspection, maintenance and operation of the various types of facilities. The inspection guidance is listed in Table 1, with an indication of which parts will be included in an RPII Annual or Post-Installation Inspection. The relevant standards also contain additional parts which the operator should follow.

Inspection recommendations of relevant standards Refer to relevant standards for full text	Annual Main	RPII Annual/ Post Installation Inspection
6.1 d) Overall levels of safety of equipment (see note 1)	✓	✓ [1]
6.1 d) Overall levels of safety of foundations (see note 1)	✓	✓ [1]
6.1 d) Overall levels of safety of playing surfaces (see note 2)	✓	✓ [2]
6.1 d) Compliance with the relevant parts of the standard and or risk assessment (see note 3)	✓	✓ [3]
6.1 d) Effects of weather	✓	✓
6.1 d) Presence of rot, decay or corrosion (see note 1)	✓	✓ [1]
6.1 d) Assessment of repairs made or added or replaced components (see note 4)	✓	✓ [4]
6.1 d) Excavation or dismantling/additional measures	✓	✗
6.2.1 Assessment of glass reinforced plastics (see note 5)	✓	✓ [5]
6.2.1 Inspection of one post equipment (see note 1)	✓	✓ [1]
6.2.4 Undertaking the Operators inspection protocol	✓	✗

NB: The clause numbers in table 1 are taken from BS EN 1176 - Part 7:2020. The content is equally applicable to all other relevant standards listed herein. Playgrounds contain a range of equipment from different manufacturers and installed over a number of years; operators should implement any guidance provided by the manufacturer. Item specific detail is not readily available to RPII Playground Inspectors, whose report contributes to the operator's overall Annual Main Inspection as detailed in the relevant standards.

[1] A manual test only is undertaken for stability. Wear and instability are only detectable where readily apparent without dismantling or destruction and without the use of tools, excavation or specialist equipment. Rot and corrosion are tested or with a hammer and/or steel rod. Decay in timber may exist which can only be found with specialist equipment.

[2] Only the visible condition and dimensional compliance of surface extent is considered. Neither testing of impact attenuating properties nor measurement of the thickness of bound surfaces are undertaken on RPII annual inspections.

[3] The inspection assesses compliance where this can be tested on site using manual methods without dismantling, destruction and without the use of tools or specialist equipment.

[4] The operator should use manufacturer's recommended parts, or equivalent. We are unable to verify if such parts have been used, and any subsequent change in quality or performance.

[5] Visible glass fibres will be noted in reports. The operator is responsible for repairs or replacement.

Risk Assessment Matrix

			Scores in the report are multiplication factors of Likelihood x Severity					
			Severity>>					
Likelihood	Very High probability, if the situation is not addressed an accident is almost certain.	5	Very High	VL (5)	L (10)	M (15)	H (20)	VH (25)
	High probability an accident is probable without any added factor.	4	High	VL (4)	L (8)	M (12)	H (16)	H (20)
	Moderate probability an incident is foreseeable.	3	Moderate	VL (3)	L (6)	L (9)	M (12)	M (15)
	Some probability, requires a combination of factors to take place.	2	Low	VL (2)	VL (4)	L (6)	L (8)	L (10)
	No significant probability; lightning strike, freak accident.	1	Very Low	VL (1)	VL (2)	VL (3)	VL (4)	VL (5)
			Very Low	Low	Moderate	High	Very High	
			1	2	3	4	5	
			No injury likely e.g. damaged or soiled clothing, minor bruising, grazes	Minor injury, laceration or bruising requiring first aid only	Injury requiring medical intervention e.g. cuts requiring stitches	Serious injury including concussions or fracture of long bones	Severe injury involving a potential life changing injury or fatality	
			Severity>>					
<p>Note 1: The total risk scores included within our reports are a multiplication factor of the calculated Likelihood and Severity of each finding. Both Likelihood and Severity are given a number between 1 - 5 as shown on the matrix above and these two numbers are then multiplied together to give the total risk score that is shown against defects on the report. Total risk scores can be divided in both directions, i.e. a total risk score of 12 could be a Likelihood (3) x Severity (4) or Likelihood (4) x Severity (3).</p> <p>Note 2: When we inspect we only see a snapshot of the current condition of the equipment. It is the operators responsibility to ensure that there is a continuing level of maintenance to keep the equipment in good working order and the site fit for use.</p>								

Equipment has been assessed to the following standards where relevant:

- BS EN 1176 Parts 1-11 (Playground equipment and surfacing)
- BS EN 14974 (Facilities for users of roller sports equipment)
- BS EN 15312 (Free access multi-sports equipment)
- BS EN 16899 (Parkour Equipment)
- BS EN 16630 (Outdoor Fitness Equipment).

Napoleon Drive Play Area

Inspection Ref: 2959988

Site Ref: 38233

Inspected: 20-January-2026 - 15:05 by James Pyke (RPII Annual inspector)

Risk Assessment: 10 Low Risk



Location:

The site is partially overlooked by properties in the local community

Disabled Access:

Generally accessible; an area accessible to most.

i 6 - Low Risk

Item: Site General
Manufacturer: Not Identified
Surface Type:
Item Quantity: 1
Equipment Compliance: N/A
Surface Area Compliance: N/A

Total Findings: 1



Finding 1

There is some tree debris on the surfacing - Remove and maintain

i 4 - Very Low Risk

Item: Sign
Manufacturer: Not Identified
Surface Type: N/A
Item Quantity: 1
Equipment Compliance: N/A
Surface Area Compliance: N/A

Total Findings: 1



Finding 1

This item is satisfactory - no work required -

i 6 - Low Risk

Item: Gate - Self Closing
Manufacturer: Not Identified
Surface Type:
Item Quantity: 1
Equipment Compliance: N/A
Surface Area Compliance: N/A

Total Findings: 1



Finding 1

The paint is flaking off the metalwork - Rub down and re-paint

i 6 - Low Risk

Item: Gate - Maintenance
Manufacturer: Not Identified
Surface Type:
Item Quantity: 1
Equipment Compliance: N/A
Surface Area Compliance: N/A

Total Findings: 4



Finding 1

The maintenance gate was correctly padlocked at the time of inspection, however this means that the inspector was unable to fully assess the gate - Ensure that there are 12mm gaps throughout the full range of motion on gate/s and between leaves where relevant

Finding 2

The gate has no drop bolt sleeves and/or drop bolts fitted - Provide drop bolt sleeves and/or drop bolts

Finding 3

The paint is flaking off the metalwork - Rub down and re-paint

Finding 4

Cable ties are present and there are sharp projecting ends - Remove redundant cable ties

i 6 - Low Risk

Item: Fence - Bow Top
Manufacturer: Not Identified
Surface Type:
Item Quantity: 1
Equipment Compliance: N/A
Surface Area Compliance: N/A



Total Findings: 2

Finding 1

There is some damage to the fence sections - Monitor for any further deterioration and repair as required

Finding 2

The paint is flaking off the metalwork - Rub down and re-paint

i 4 - Very Low Risk

Item: Bench
Manufacturer: Not Identified
Surface Type:
Item Quantity: 1
Equipment Compliance: N/A
Surface Area Compliance: N/A



Total Findings: 1

Finding 1

This item is satisfactory - no work required -

i 4 - Very Low Risk

Item: Litter Bin
Manufacturer: Wicksteed Playgrounds
Surface Type:
Item Quantity: 1
Equipment Compliance: N/A
Surface Area Compliance: N/A



Total Findings: 1

Finding 1

This item is satisfactory - no work required -

i 6 - Low Risk

Item: Spring Bee
Manufacturer: Wicksteed Playgrounds
Surface Type: Wet Pour
Item Quantity: 1
Equipment Compliance: Yes
Surface Area Compliance: Yes
Life Expectancy: 5 -10 Years
Total Findings: 3



Finding 1

The Handgrips/Footrests rotate and may cause an unexpected movement for the user - Secure Handgrips/Footrests to prevent rotation.

Finding 2

A number of fixing(s) have worked loose - Secure all loose fixings

Finding 3

The paintwork on this item has been damaged or worn exposing the metal underneath which is rusting / corroding - Treat affected areas and repaint

i 6 - Low Risk

Item: Toadstools
Manufacturer: Wicksteed Playgrounds
Surface Type: Wet Pour
Item Quantity: 1
Equipment Compliance: Yes
Surface Area Compliance: Yes
Life Expectancy: 5 -10 Years
Total Findings: 1



Finding 1

There is algae or moss on the surface of the equipment - Clean and treat appropriately

i 8 - Low Risk

Item: Spring See-Saw
Manufacturer: Wicksteed Playgrounds
Surface Type: Wet Pour
Item Quantity: 1
Equipment Compliance: Yes
Surface Area Compliance: Yes
Life Expectancy: 5 -10 Years
Total Findings: 2



Finding 1

The spring cover is damaged, split or missing - Replace the cover

Finding 2

There is or are fixings missing on the item - Replace all missing fixings

i 5 - Very Low Risk

Item: Multi Play (Toddler)
Manufacturer: Wicksteed Playgrounds
Surface Type: Wet Pour
Item Quantity: 1
Equipment Compliance: No
Surface Area Compliance: Yes
Life Expectancy: 5 -10 Years
Total Findings: 2



Finding 1

The free space between the fireman's pole and the platform is less than the minimum recommended dimension of 350mm in BS EN 1176 Part 1; this is however an intended design feature by the manufacturer to assist younger users in accessing the pole and is a very low risk finding - no remedial action is recommended - Monitor - No action given the risk assessment

Finding 2

There is/are inserts missing - Replace missing inserts

i 6 - Low Risk

Item: Spring Ladybird
Manufacturer: Wicksteed Playgrounds
Surface Type: Wet Pour
Item Quantity: 1
Equipment Compliance: Yes
Surface Area Compliance: Yes
Life Expectancy: 5 -10 Years
Total Findings: 2



Finding 1

The Handgrips/Footrests rotate and may cause an unexpected movement for the user - Secure Handgrips/Footrests to prevent rotation.

Finding 2

The paintwork on this item has been damaged or worn exposing the metal underneath which is rusting / corroding - Treat affected areas and repaint

i 4 - Very Low Risk

Item: Play Panel
Manufacturer: Wicksteed Playgrounds
Surface Type: Wet Pour
Item Quantity: 1
Equipment Compliance: Yes
Surface Area Compliance: N/A
Life Expectancy: 5 -10 Years
Total Findings: 1



Finding 1

This item is satisfactory - no work required -

i 6 - Low Risk

Item: Play Panel
Manufacturer: Wicksteed Playgrounds
Surface Type: Wet Pour
Item Quantity: 1
Equipment Compliance: Yes
Surface Area Compliance: N/A
Life Expectancy: 5 -10 Years
Total Findings: 2



Finding 1

The item has missing component(s) - Consider replacing missing components

Finding 2

The item has been damaged - Monitor for any further deterioration and replace as required

i 10 - Low Risk

Item: 1 Bay Swing
Manufacturer: Wicksteed Playgrounds
Surface Type: Wet Pour
Item Quantity: 1
Equipment Compliance: No
Surface Area Compliance: Yes
Life Expectancy: 5 -10 Years
Total Findings: 5



Finding 1
 Parts of the steel structure protrude beyond the protected elements of the seat and have no impact attenuating protection for users passing by or underneath - Refer to manufacturer for confirmation of design risk assessment

Finding 2
 There is some notable evidence of chain wear - Monitor for any further deterioration and replace when 40% worn

Finding 3
 There is some wear to the shackles. - Monitor for any further deterioration and replace when 40% worn

Finding 4
 The bush / bushes is / are showing signs of wear - Monitor for any further deterioration and replace as required

Finding 5
 The fixings have corroded excessively - Replace all corroded fixings

i 8 - Low Risk

Item: Train
Manufacturer: Wicksteed Playgrounds
Surface Type: Wet Pour
Item Quantity: 1
Equipment Compliance: Yes
Surface Area Compliance: Yes
Life Expectancy: 5 -10 Years
Total Findings: 1



Finding 1
 There is or are fixings missing on the item - Replace all missing fixings

i 6 - Low Risk

Item: Spinning Pole
Manufacturer: Wicksteed Playgrounds
Surface Type: Wet Pour
Item Quantity: 1
Equipment Compliance: Yes
Surface Area Compliance: Yes
Life Expectancy: 5 -10 Years
Total Findings: 1



Finding 1

The paintwork on this item has been damaged or worn exposing the metal underneath which is rusting / corroding - Treat affected areas and repaint

i 6 - Low Risk

Item: Bench
Manufacturer: Not Identified
Surface Type: Wet Pour
Item Quantity: 1
Equipment Compliance: N/A
Surface Area Compliance: N/A

Total Findings: 1



Finding 1

The paintwork on this item has been damaged or worn exposing the metal underneath which is rusting / corroding - Treat affected areas and repaint

i 4 - Very Low Risk

Item: Picnic Table
Manufacturer: Kompan Ltd
Surface Type: Wet Pour
Item Quantity: 1
Equipment Compliance: Yes
Surface Area Compliance: Yes

Total Findings: 1

**Finding 1**

This item is satisfactory - no work required -

Findings information

i 6 - Low Risk (Finding 1)

Item: Ancillary Items - Site General
Manufacturer: Not Identified

Risk Level: L - Low Risk
Surface:



Finding: There is some tree debris on the surfacing

Action: Remove and maintain

i 6 - Low Risk (Finding 1)

Item: Gates - Gate - Self Closing
Manufacturer: Not Identified

Risk Level: L - Low Risk
Surface:



Finding: The paint is flaking off the metalwork

Action: Rub down and re-paint

i 0 - Risk Assessment not Undertaken (Finding 1)

Item: Gates - Gate - Maintenance
Manufacturer: Not Identified

Risk Level: N - Risk Assessment not Undertaken
Surface:



Finding: The maintenance gate was correctly padlocked at the time of inspection, however this means that the inspector was unable to fully assess the gate

Action: Ensure that there are 12mm gaps throughout the full range of motion on gate/s and between leaves where relevant

i 6 - Low Risk (Finding 2)

Item: Gates - Gate - Maintenance
Manufacturer: Not Identified

Risk Level: L - Low Risk
Surface:



Finding: The gate has no drop bolt sleeves and/or drop bolts fitted

Action: Provide drop bolt sleeves and/or drop bolts

i 6 - Low Risk (Finding 3)

Item: Gates - Gate - Maintenance
Manufacturer: Not Identified

Risk Level: L - Low Risk
Surface:



Finding: The paint is flaking off the metalwork

Action: Rub down and re-paint

i 6 - Low Risk (Finding 4)

Item: Gates - Gate - Maintenance
Manufacturer: Not Identified

Risk Level: L - Low Risk
Surface:



Finding: Cable ties are present and there are sharp projecting ends

Action: Remove redundant cable ties

i 6 - Low Risk (Finding 1)

Item: Fences - Fence - Bow Top
Manufacturer: Not Identified

Risk Level: L - Low Risk
Surface:



Finding: There is some damage to the fence sections

Action: Monitor for any further deterioration and repair as required

i 6 - Low Risk (Finding 2)

Item: Fences - Fence - Bow Top
Manufacturer: Not Identified

Risk Level: L - Low Risk
Surface:



Finding: The paint is flaking off the metalwork

Action: Rub down and re-paint

i 6 - Low Risk (Finding 1)

Item: Rocking Equipment - Spring Bee
Manufacturer: Wicksteed Playgrounds

Risk Level: L - Low Risk
Surface: Wet Pour



Finding: The Handgrips/Footrests rotate and may cause an unexpected movement for the user

Action: Secure Handgrips/Footrests to prevent rotation.

i 6 - Low Risk (Finding 2)

Item: Rocking Equipment - Spring Bee
Manufacturer: Wicksteed Playgrounds

Risk Level: L - Low Risk
Surface: Wet Pour



Finding: A number of fixing(s) have worked loose

Action: Secure all loose fixings

i 6 - Low Risk (Finding 3)

Item: Rocking Equipment - Spring Bee
Manufacturer: Wicksteed Playgrounds

Risk Level: L - Low Risk
Surface: Wet Pour



Finding: The paintwork on this item has been damaged or worn exposing the metal underneath which is rusting / corroding

Action: Treat affected areas and repaint

i 6 - Low Risk (Finding 1)

Item: Activity Equipment - Toadstools
Manufacturer: Wicksteed Playgrounds

Risk Level: L - Low Risk
Surface: Wet Pour



Finding: There is algae or moss on the surface of the equipment

Action: Clean and treat appropriately

i 8 - Low Risk (Finding 1)

Item: Rocking Equipment - Spring See-Saw
Manufacturer: Wicksteed Playgrounds

Risk Level: L - Low Risk
Surface: Wet Pour



Finding: The spring cover is damaged, split or missing

Action: Replace the cover

i 8 - Low Risk (Finding 2)

Item: Rocking Equipment - Spring See-Saw
Manufacturer: Wicksteed Playgrounds

Risk Level: L - Low Risk
Surface: Wet Pour



Finding: There is or are fixings missing on the item

Action: Replace all missing fixings

i 5 - Very Low Risk (Finding 1)

Item: Activity Equipment - Multi Play (Toddler)
Manufacturer: Wicksteed Playgrounds

Risk Level: V - Very Low Risk
Surface: Wet Pour



Finding: The free space between the fireman's pole and the platform is less than the minimum recommended dimension of 350mm in BS EN 1176 Part 1; this is however an intended design feature by the manufacturer to assist younger users in accessing the pole and is a very low risk finding - no remedial action is recommended

Action: Monitor - No action given the risk assessment

i 4 - Very Low Risk (Finding 2)

Item: Activity Equipment - Multi Play (Toddler)
Manufacturer: Wicksteed Playgrounds

Risk Level: V - Very Low Risk
Surface: Wet Pour



Finding: There is/are inserts missing

Action: Replace missing inserts

i 6 - Low Risk (Finding 1)

Item: Rocking Equipment - Spring Ladybird
Manufacturer: Wicksteed Playgrounds

Risk Level: L - Low Risk
Surface: Wet Pour



Finding: The Handgrips/Footrests rotate and may cause an unexpected movement for the user
Action: Secure Handgrips/Footrests to prevent rotation.

i 6 - Low Risk (Finding 2)

Item: Rocking Equipment - Spring Ladybird
Manufacturer: Wicksteed Playgrounds

Risk Level: L - Low Risk
Surface: Wet Pour



Finding: The paintwork on this item has been damaged or worn exposing the metal underneath which is rusting / corroding
Action: Treat affected areas and repaint

i 6 - Low Risk (Finding 1)

Item: Activity Equipment - Play Panel
Manufacturer: Wicksteed Playgrounds

Risk Level: L - Low Risk
Surface: Wet Pour



Finding: The item has missing component(s)

Action: Consider replacing missing components

i 6 - Low Risk (Finding 2)

Item: Activity Equipment - Play Panel
Manufacturer: Wicksteed Playgrounds

Risk Level: L - Low Risk
Surface: Wet Pour



Finding: The item has been damaged

Action: Monitor for any further deterioration and replace as required

i 10 - Low Risk (Finding 1)

Item: Swings - 1 Bay Swing
Manufacturer: Wicksteed Playgrounds

Risk Level: L - Low Risk
Surface: Wet Pour



Finding: Parts of the steel structure protrude beyond the protected elements of the seat and have no impact attenuating protection for users passing by or underneath

Action: Refer to manufacturer for confirmation of design risk assessment

i 6 - Low Risk (Finding 2)

Item: Swings - 1 Bay Swing
Manufacturer: Wicksteed Playgrounds

Risk Level: L - Low Risk
Surface: Wet Pour



Finding: There is some notable evidence of chain wear

Action: Monitor for any further deterioration and replace when 40% worn

i 6 - Low Risk (Finding 3)

Item: Swings - 1 Bay Swing
Manufacturer: Wicksteed Playgrounds

Risk Level: L - Low Risk
Surface: Wet Pour



Finding: There is some wear to the shackles.

Action: Monitor for any further deterioration and replace when 40% worn

i 4 - Very Low Risk (Finding 4)

Item: Swings - 1 Bay Swing
Manufacturer: Wicksteed Playgrounds

Risk Level: V - Very Low Risk
Surface: Wet Pour



Finding: The bush / bushes is / are showing signs of wear

Action: Monitor for any further deterioration and replace as required

i 8 - Low Risk (Finding 5)

Item: Swings - 1 Bay Swing
Manufacturer: Wicksteed Playgrounds

Risk Level: L - Low Risk
Surface: Wet Pour



Finding: The fixings have corroded excessively

Action: Replace all corroded fixings

i 8 - Low Risk (Finding 1)

Item: Activity Equipment - Train
Manufacturer: Wicksteed Playgrounds

Risk Level: L - Low Risk
Surface: Wet Pour



Finding: There is or are fixings missing on the item

Action: Replace all missing fixings

i 6 - Low Risk (Finding 1)

Item: Rotor Play - Spinning Pole
Manufacturer: Wicksteed Playgrounds

Risk Level: L - Low Risk
Surface: Wet Pour



Finding: The paintwork on this item has been damaged or worn exposing the metal underneath which is rusting / corroding

Action: Treat affected areas and repaint

i 6 - Low Risk (Finding 1)

Item: Ancillary Items - Bench
Manufacturer: Not Identified

Risk Level: L - Low Risk
Surface: Wet Pour



Finding: The paintwork on this item has been damaged or worn exposing the metal underneath which is rusting / corroding

Action: Treat affected areas and repaint



the **play inspection** company

Annual Inspection

Marden Parish Council

Southons Field - Play Trail

Tonbridge, Marden, TN12 9AE



API Associate



Unit 5, Glenmore Business Park, Blackhill Road, Poole, Dorset, BH16 6NL
t- 01202 590675 e- info@playinspections.co.uk

[www. playinspections .co.uk](http://www.playinspections.co.uk)

Inspection Scope for RPII Inspection Methodology

This document outlines the RPII scope for inspections undertaken by the Inspectors listed as Annual Inspectors on the RPII Register of Inspectors when undertaking Indoor Annual, Outdoor Annual, Outdoor Operational and Outdoor Routine inspections.

Inspections are undertaken with reference to the standards listed in this preamble only; where no date for the standard is given it will be the standard that is current at the time of inspection except where overlap periods are granted by the standards committee when standards are updated. The information contained in reports is provided to assist the owner/operator in fulfilling their responsibilities as detailed in the relevant standard. Other standards referenced within the listed standards do not form part of the inspection, unless they are also explicitly listed here.

The following standards are relevant to all installations of equipment that are publicly accessible to users; this includes public parks, pay and play parks, schools, nurseries, public houses, holiday parks, indoor play centres, farm parks etc. All equipment used or employed in publicly accessible areas should meet with the requirements of the relevant standards (listed below):

BS EN 1176 Parts 1, 2, 3, 4, 5, 6, 10 & 11 Playground equipment intended for permanent installation outdoors & indoors.

BS EN 1176 Part 7 - 'Guidance on Installation, Inspection, Maintenance and Operation' (this document gives guidance to the owners/operators of the facility on the installation, inspection, maintenance and operation of playground equipment, excluding ancillary items).

In the United Kingdom the National Foreword forms an important part to the understanding and implementation of the recommendations set out in this document. It clarifies the application of the document within the UK as best practice guidance, as the document has been used since its initial publication. Therefore, in the UK this standard (BS EN 1176 – Part 7) contains no requirements and needs to be read and implemented as guidance, with the use of the term 'shall' therefore becoming a recommendation, as in the term 'should'.

Domestic play equipment falls outside of the scope of BS EN 1176 and has its own standards (BS EN 71 series – Safety of Toys). Where domestic equipment can be identified this will be acknowledged in the report but any comments concerning compliance will follow the requirements and recommendations of BS EN 1176.

When water play items, including spray parks, are inspected any comments concerning compliance within the inspection will refer to BS EN 1176. We have not assessed these against the requirements of BS EN 17232 (Water play equipment and features).

Other equipment that is not clearly identified as unsupervised or domestic (natural play, self-build equipment etc.) will be assessed for compliance with the relevant standard listed below:

BS EN 15312 Free access multi-sports equipment
BS EN 14974 Skateparks
BS EN 16630 Permanently installed outdoor fitness equipment
BS EN 16899 Parkour equipment (plus RPII/API guidance notes)

Annual and Post Installation inspections will take into consideration compliance with these current standards, and defects related to wear and vandalism. Items not listed in the report have not been included in the inspection. The inspection will cover the playground equipment and the active area (that area which is obviously part of the playground), nominally up to three metres around, the fence line if closer, or other areas as agreed.

Operational inspections only take into consideration defects related to cleanliness, equipment ground clearances, ground surface finishes, exposed foundations, sharp edges, missing parts, excessive wear (of moving parts) structural integrity, wear and vandalism.

Routine visual inspections relate only to the most obvious defects such as broken or missing parts, litter, vandalism and issues created by severe weather conditions (the intention is to identify hazards created by storm damage).

All inspections are non-dismantling, non-destructive and do not include any structural, toxicology or impact assessments defined in the standard; however, the inspector will undertake a manual test for stability and if equipment fails under manual load, or any other hazard is identified as an unacceptable risk, the owner/operator will be notified as soon as practicably possible.

The inspector will access all reasonably accessible equipment and will assess all reasonably accessible parts above the standing surface. Where it is not possible to access parts of the equipment without employing an alternative means of access the report will record the action required by the owner/operator to ensure the continued safe use of the equipment.

Ancillary equipment will be assessed using the inspector's knowledge and experience of the standards named in this document. (Note: Ancillary items are not included in the specific equipment-type parts of the EN 1176 series; hence they are not assessed for compliance with EN 1176 series and are subject to a general safety assessment).

The owner/operator is responsible for the overall safety of the equipment and area.

The inspector will not undertake any of the following works unless specifically agreed in writing at the time of order:

Checking the depth and underlying structural integrity of any surface areas and/or carrying out any testing of the impact attenuating properties of any surfaces; the identification of any corrosion, rot or other deterioration in any apparatus or equipment other than by an external inspection; the inspection of any equipment (or part thereof) that is beneath the playing surface (loose-fill materials may be moved to expose foundations); tightening any bolts, hinges or other fixing devices on any apparatus or equipment; assessing or inspecting any electrical installations contained on any site and/or apparatus and/or equipment; assessing or inspecting any water supplies and/or water features and/or any associated computerised systems (including carrying out any programming); where planting or trees are mentioned in the report no assessments of toxicity, suitability or condition are undertaken – the owner/operator should have suitable inspections provided by a competent person.

The owner/operator should have a 'design risk assessment' provided by the manufacturer/designer of the area for the equipment and location in which the facility is installed.

The operator is responsible for managing risks of their provision and is required by law to carry out a 'suitable and sufficient assessment' of the risks associated with a site or activity. This inspection shall be considered as contributing to the operator's discharge of this responsibility.

The details contained within the report are a snapshot of the condition at the time of inspection only and subsequent events may affect the condition of the facility. Suggested remedial actions are based on the knowledge and experience of the inspector and/or that of the inspection company. The owner/operator should always seek the advice of the manufacturer or a competent person when undertaking repairs and/or modifications to equipment.

A full copy of the Play Inspection Company Ltd. Terms & Conditions is available on our website (www.playinspections.co.uk)

The operator is responsible for following the guidance of the relevant standards. The standards give guidance on the installation, inspection, maintenance and operation of the various types of facilities. The inspection guidance is listed in Table 1, with an indication of which parts will be included in an RPII Annual or Post-Installation Inspection. The relevant standards also contain additional parts which the operator should follow.

Inspection recommendations of relevant standards Refer to relevant standards for full text	Annual Main	RPII Annual/ Post Installation Inspection
6.1 d) Overall levels of safety of equipment (see note 1)	✓	✓ [1]
6.1 d) Overall levels of safety of foundations (see note 1)	✓	✓ [1]
6.1 d) Overall levels of safety of playing surfaces (see note 2)	✓	✓ [2]
6.1 d) Compliance with the relevant parts of the standard and or risk assessment (see note 3)	✓	✓ [3]
6.1 d) Effects of weather	✓	✓
6.1 d) Presence of rot, decay or corrosion (see note 1)	✓	✓ [1]
6.1 d) Assessment of repairs made or added or replaced components (see note 4)	✓	✓ [4]
6.1 d) Excavation or dismantling/additional measures	✓	✗
6.2.1 Assessment of glass reinforced plastics (see note 5)	✓	✓ [5]
6.2.1 Inspection of one post equipment (see note 1)	✓	✓ [1]
6.2.4 Undertaking the Operators inspection protocol	✓	✗

NB: The clause numbers in table 1 are taken from BS EN 1176 - Part 7:2020. The content is equally applicable to all other relevant standards listed herein. Playgrounds contain a range of equipment from different manufacturers and installed over a number of years; operators should implement any guidance provided by the manufacturer. Item specific detail is not readily available to RPII Playground Inspectors, whose report contributes to the operator's overall Annual Main Inspection as detailed in the relevant standards.

[1] A manual test only is undertaken for stability. Wear and instability are only detectable where readily apparent without dismantling or destruction and without the use of tools, excavation or specialist equipment. Rot and corrosion are tested or with a hammer and/or steel rod. Decay in timber may exist which can only be found with specialist equipment.

[2] Only the visible condition and dimensional compliance of surface extent is considered. Neither testing of impact attenuating properties nor measurement of the thickness of bound surfaces are undertaken on RPII annual inspections.

[3] The inspection assesses compliance where this can be tested on site using manual methods without dismantling, destruction and without the use of tools or specialist equipment.

[4] The operator should use manufacturer's recommended parts, or equivalent. We are unable to verify if such parts have been used, and any subsequent change in quality or performance.

[5] Visible glass fibres will be noted in reports. The operator is responsible for repairs or replacement.

Risk Assessment Matrix

			Scores in the report are multiplication factors of Likelihood x Severity					
			Severity>>					
Likelihood	Very High probability, if the situation is not addressed an accident is almost certain.	5	Very High	VL (5)	L (10)	M (15)	H (20)	VH (25)
	High probability an accident is probable without any added factor.	4	High	VL (4)	L (8)	M (12)	H (16)	H (20)
	Moderate probability an incident is foreseeable.	3	Moderate	VL (3)	L (6)	L (9)	M (12)	M (15)
	Some probability, requires a combination of factors to take place.	2	Low	VL (2)	VL (4)	L (6)	L (8)	L (10)
	No significant probability; lightning strike, freak accident.	1	Very Low	VL (1)	VL (2)	VL (3)	VL (4)	VL (5)
			Very Low	Low	Moderate	High	Very High	
			1	2	3	4	5	
			No injury likely e.g. damaged or soiled clothing, minor bruising, grazes	Minor injury, laceration or bruising requiring first aid only	Injury requiring medical intervention e.g. cuts requiring stitches	Serious injury including concussions or fracture of long bones	Severe injury involving a potential life changing injury or fatality	
			Severity>>					
<p>Note 1: The total risk scores included within our reports are a multiplication factor of the calculated Likelihood and Severity of each finding. Both Likelihood and Severity are given a number between 1 - 5 as shown on the matrix above and these two numbers are then multiplied together to give the total risk score that is shown against defects on the report. Total risk scores can be divided in both directions, i.e. a total risk score of 12 could be a Likelihood (3) x Severity (4) or Likelihood (4) x Severity (3).</p> <p>Note 2: When we inspect we only see a snapshot of the current condition of the equipment. It is the operators responsibility to ensure that there is a continuing level of maintenance to keep the equipment in good working order and the site fit for use.</p>								

Equipment has been assessed to the following standards where relevant:

- BS EN 1176 Parts 1-11 (Playground equipment and surfacing)
- BS EN 14974 (Facilities for users of roller sports equipment)
- BS EN 15312 (Free access multi-sports equipment)
- BS EN 16899 (Parkour Equipment)
- BS EN 16630 (Outdoor Fitness Equipment).

Southons Field - Play Trail

Inspection Ref: 2959989

Site Ref: 38234

Inspected: 20-January-2026 - 15:28 by James Pyke (RPII Annual inspector)

Risk Assessment: 8 Low Risk

**Location:**

The site is located in an area of public open space and is not directly overlooked by any properties in the local community.

Disabled Access:

Some accessible features; an area that presents difficulties to the majority of people with disabilities but in favourable circumstances and certainly in partnership can be accessed.

i 4 - Very Low Risk

Item: Sign
Manufacturer: Not Identified
Surface Type: N/A
Item Quantity: 1
Equipment Compliance: N/A
Surface Area Compliance: N/A

Total Findings: 1



Finding 1

This item is satisfactory - no work required -

i 6 - Low Risk

Item: Picnic Table
Manufacturer: Not Identified
Surface Type: Grass
Item Quantity: 9
Equipment Compliance: N/A
Surface Area Compliance: N/A

Total Findings: 1



Finding 1

There is algae or moss on the surface of the bench - Clean and treat appropriately

i 4 - Very Low Risk

Item: Litter Bin
Manufacturer: Not Identified
Surface Type: Grass
Item Quantity: 1
Equipment Compliance: N/A
Surface Area Compliance: N/A



Total Findings: 1

Finding 1

This item is satisfactory - no work required -

i 6 - Low Risk

Item: Activity Trail
Manufacturer: Playdale Playgrounds Ltd
Surface Type: Grass
Item Quantity: 1
Equipment Compliance: Yes
Surface Area Compliance: Yes
Life Expectancy: 5 -10 Years
Total Findings: 6



Finding 1

There is some strimmer / machinery damage apparent on the posts, this can penetrate the preservative applied to the timber and accelerate the rotting process - Monitor for any deterioration (rot) and replace as required

Finding 2

There is some evidence of rot in the timber - Monitor for any further deterioration and replace as required

Finding 3

There is algae or moss on the surface of the equipment - Clean and treat appropriately

Finding 4

There is/are bolt cap covers missing or damaged on the item - Replace missing or damaged bolt cap covers

Finding 5

There are sharp protruding staples on the item - Remove staples

Finding 6

The tree canopy overhangs the equipment and is less than 2.0m away - Lift tree canopy to ensure a minimum clearance of 2.0m from the equipment

i 8 - Low Risk

Item: 2 Bay Swing
Manufacturer: Playdale Playgrounds Ltd
Surface Type: Grass Matrix Tiles
Item Quantity: 1
Equipment Compliance: Yes
Surface Area Compliance: Yes
Life Expectancy: 5 -10 Years
Total Findings: 7



Finding 1

There is moderate damage to the surface - Repair the damaged areas of surfacing

Finding 3

There are projecting bolt thread(s) present - Remove excess thread length and deburr or provide cap

Finding 5

The swing seat connectors have some wear present - Monitor for further deterioration and replace when 40% worn

Finding 7

The bush / bushes is / are showing signs of wear - Monitor for any further deterioration and replace as required

Finding 2

There are caps missing from the underside of the seats - Replace missing caps under the seats

Finding 4

There is some notable evidence of chain wear - Monitor for any further deterioration and replace when 40% worn

Finding 6

There is some wear to the shackles. - Monitor for any further deterioration and replace when 40% worn

Findings information

i 6 - Low Risk (Finding 1)

Item: Ancillary Items - Picnic Table
Manufacturer: Not Identified

Risk Level: L - Low Risk
Surface: Grass



Finding: There is algae or moss on the surface of the bench **Action:** Clean and treat appropriately

i 6 - Low Risk (Finding 1)

Item: Activity Equipment - Activity Trail
Manufacturer: Playdale Playgrounds Ltd

Risk Level: L - Low Risk
Surface: Grass



Finding: There is some strimmer / machinery damage apparent on the posts, this can penetrate the preservative applied to the timber and accelerate the rotting process

Action: Monitor for any deterioration (rot) and replace as required

i 6 - Low Risk (Finding 2)

Item: Activity Equipment - Activity Trail
Manufacturer: Playdale Playgrounds Ltd

Risk Level: L - Low Risk
Surface: Grass



Finding: There is some evidence of rot in the timber

Action: Monitor for any further deterioration and replace as required

i 6 - Low Risk (Finding 3)

Item: Activity Equipment - Activity Trail
Manufacturer: Playdale Playgrounds Ltd

Risk Level: L - Low Risk
Surface: Grass



Finding: There is algae or moss on the surface of the equipment

Action: Clean and treat appropriately

i 4 - Very Low Risk (Finding 4)

Item: Activity Equipment - Activity Trail
Manufacturer: Playdale Playgrounds Ltd

Risk Level: V - Very Low Risk
Surface: Grass



Finding: There is/are bolt cap covers missing or damaged on the item

Action: Replace missing or damaged bolt cap covers

i 6 - Low Risk (Finding 5)

Item: Activity Equipment - Activity Trail
Manufacturer: Playdale Playgrounds Ltd

Risk Level: L - Low Risk
Surface: Grass



Finding: There are sharp protruding staples on the item

Action: Remove staples

i 6 - Low Risk (Finding 6)

Item: Activity Equipment - Activity Trail
Manufacturer: Playdale Playgrounds Ltd

Risk Level: L - Low Risk
Surface: Grass



Finding: The tree canopy overhangs the equipment and is less than 2.0m away

Action: Lift tree canopy to ensure a minimum clearance of 2.0m from the equipment

i 8 - Low Risk (Finding 1)

Item: Swings - 2 Bay Swing
Manufacturer: Playdale Playgrounds Ltd

Risk Level: L - Low Risk
Surface: Grass Matrix Tiles



Finding: There is moderate damage to the surface

Action: Repair the damaged areas of surfacing

i 6 - Low Risk (Finding 2)

Item: Swings - 2 Bay Swing
Manufacturer: Playdale Playgrounds Ltd

Risk Level: L - Low Risk
Surface: Grass Matrix Tiles



Finding: There are caps missing from the underside of the seats

Action: Replace missing caps under the seats

i 8 - Low Risk (Finding 3)

Item: Swings - 2 Bay Swing
Manufacturer: Playdale Playgrounds Ltd

Risk Level: L - Low Risk
Surface: Grass Matrix Tiles



Finding: There are projecting bolt thread(s) present

Action: Remove excess thread length and deburr or provide cap

i 6 - Low Risk (Finding 4)

Item: Swings - 2 Bay Swing
Manufacturer: Playdale Playgrounds Ltd

Risk Level: L - Low Risk
Surface: Grass Matrix Tiles



Finding: There is some notable evidence of chain wear

Action: Monitor for any further deterioration and replace when 40% worn

i 6 - Low Risk (Finding 5)

Item: Swings - 2 Bay Swing
Manufacturer: Playdale Playgrounds Ltd

Risk Level: L - Low Risk
Surface: Grass Matrix Tiles



Finding: The swing seat connectors have some wear present

Action: Monitor for further deterioration and replace when 40% worn

i 6 - Low Risk (Finding 6)

Item: Swings - 2 Bay Swing
Manufacturer: Playdale Playgrounds Ltd

Risk Level: L - Low Risk
Surface: Grass Matrix Tiles



Finding: There is some wear to the shackles.

Action: Monitor for any further deterioration and replace when 40% worn

i 4 - Very Low Risk (Finding 7)

Item: Swings - 2 Bay Swing
Manufacturer: Playdale Playgrounds Ltd

Risk Level: V - Very Low Risk
Surface: Grass Matrix Tiles



Finding: The bush / bushes is / are showing signs of wear

Action: Monitor for any further deterioration and replace as required

BREAKDOWN OF PLAY AREA INSPECTIONS 2026 Risk Indication

Undertaken by The Play Inspection Company on 20th January 2026

Playing Field

<u>Very Low Risk</u>	<u>Low Risk</u>	<u>Moderate</u>	<u>High</u>	<u>Very High</u>

“Monitor” – continue checking on weekly assessments

Gate Self Closing: Low Risk

Finding	Issue	Who to remedy? Caretaker/Contractor
1	One gate is not operating correctly – Take effective action to ensure the gate closes between 4 and 8 seconds.	Contractor
2	There are openings that are less than 12mm that could trap or crush fingers – provide a 12mm gap throughout full range of motion at both sides of gate.	Contractor
3	The paint is flaking off the metalwork - Rub down and re-paint.	Caretaker
4	One gate is closing too quickly (less than 4 seconds) – Take corrective action to ensure the gate closes in 4-8 seconds from 90 degrees	Contractor

Maintenance Gate: Low Risk

Finding	Issue	Who to remedy? Caretaker/Contractor
1	The maintenance gate was correctly padlocked at the time of inspection. However, this means that the inspector was unable to fully assess the gate – Ensure that there are 12mm gaps throughout the full range of motion on gate/s and between leaves where relevant.	Contractor
2	The gate has no drop bolt sleeves and/or drop bolts fitted – Provide drop bolt sleeves and/or drop bolts.	Contractor

Fence – Bow Top: Low Risk

Finding	Issue	Who to remedy? Caretaker/Contractor
1	There is some damage to the fencing sections – monitor for any further deterioration and repair as required.	Contractor

Bench: Low Risk

Finding	Issue	Who to remedy? Caretaker/Contractor
1	The Paintwork on this item has been damaged or worn exposing the metal underneath which is rusting/corroding – Treat affected areas and repaint.	Caretaker

Basket Swing Type 1: Low Risk

Finding	Issue	Who to remedy? Caretaker/Contractor
1	The seat is severely damaged and requires replacing – Replace damaged seat	Contractor
2	The seats are too close to the frame as defined In BS EN 1176 part 2; this is a low-risk failure, and no remedial action is required – monitor – No remedial work recommended.	Monitor
3	There is some notable evidence of chain wear – Monitor for any further deterioration and replace when 40% worn.	Monitor
4	There is some wear to the shackles – Monitor for any further deterioration and replace when 40% worn	Monitor
5	The swing seat connectors have some wear present – Monitor for further deterioration and replace when 40% worn	Monitor
6	The bushes are showing signs of wear – Monitor and replace as required.	Monitor
7	The split pins are missing from the shackles -Insert split pins to secure the shackles	Contractor

Swings: 2 Bay, 2 flat, 2 cradle: Low Risk

Finding	Issue	Who to remedy? Caretaker/Contractor
1	The chain openings are more than the 8.6mm as recommended by BS EN 1176 – Monitor – No remedial work recommended.	Monitor

2	The seats are too close to the frame as defined in BS EN 1176 Part 2; this is a low-risk failure, and no remedial action is required – Monitor – No remedial work recommended.	Monitor
3	There is notable evidence of chain wear – Monitor for any further deterioration and replace when 40% worn.	Monitor
4	There is some wear to the shackles – Monitor for any further deterioration and replace when 40% worn	Monitor
5	The bushes are showing signs of wear – Monitor for any further deterioration and replace as required.	Monitor
6	The seat has minor damage – Monitor for any further deterioration and replace as required.	Monitor
7	The swing seat connectors are loose – Tighten to secure	Contractor
8	The fixings have corroded excessively – Replace all corroded fixings	Contractor
9	The paintwork on the item has been damaged or worn exposing the metal underneath which is rusting/corroding – Treat affected areas and paint.	Caretaker
	There is some minor damage to the surface – Monitor for any further deterioration and repair as required.	Monitor

Multi Play Junior: (Climbing Frame/Main Playing Field): Low Risk

Finding	Issue	Who to remedy? Caretaker/Contractor
1	The surfacing dimensions are short and do not meet with the requirements of the current applicable standard – Monitor – No remedial action recommended.	Monitor
2	This item has no slide bar fitted as required by BS EN 1176 Part 3 – Monitor – No remedial work recommended.	Monitor
3	There are several dents in the slide surface – Monitor for any further deterioration and repair as required.	Monitor
4	There is/are bolt cap covers missing on the item – Replace missing or damaged bolt cap covers.	Contractor
5	There are inserts missing – Replace missing inserts.	Contractor
6	There are finger entrapments in the top of the climbing wall climbing wall and the item fails to meet the requirements of BS EN1176 Part 1 4.27.6 Entrapment of fingers – Adjust to remove the entrapment	Contractor
7	There is algae or moss on the surface of the equipment – Clean and treat appropriately.	Caretaker

5	There are fixings missing on the item – Replace all missing fixings.	Contractor
6	There is some graffiti present – Remove the graffiti.	Caretaker
7	There are areas or parts of the timber on the platforms that have rotted – Replace all affected timbers.	Contractor
8	The bushes are worn or missing causing the fixing lugs to wear – Replace worn or missing bushes	Contractor
9	There is some graffiti present – Remove the graffiti	Caretaker
10	There is some evidence of rot in the timber on the steps – Monitor for any further deterioration and replace as required.	Monitor
11	The paintwork on this item has been damaged or worn exposing the metal underneath which is rusting/corroding – Treat affected areas and repaint	Caretaker

Spinner Bowl: Low Risk

Finding	Issue	Who to remedy? Caretaker/Contractor
1	The paint is flaking off the metalwork – Rub down and re-paint.	Caretaker
2	There is some graffiti present – Remove the graffiti	Caretaker

Goal End: MUGA: Low Risk

Finding	Issue	Who to remedy? Caretaker/Contractor
1	A Clearly visible facility sign should be provided in a prominent position with the wording as detailed BS EN 15312 – The equipment is not intended for children less than 3 years old – the warning – Do not climb on the framework or nets – The warning – Do not hang on the ring (if provided) – The warning – Do not wear rings or other jewellery – name and telephone number of the administrator – number to call in case of accident – Provide signage to BS EN 15312	Office
2	There is/are finger entrapments in the panels and the item fails to meet the requirements of BS EN 15312 Clause 4.4.2.2 Entrapment of fingers – Monitor – No remedial work recommended.	Monitor
3	The paint is flaking off the metalwork – Rub down and re-paint.	Caretaker

4	There is algae silt or moss growth on the surface resulting in slippery conditions – Clean and treat appropriately	Caretaker
---	--	-----------

Shelter: Low Risk

1	The item has been damaged – Monitor for further deterioration – replace as required	Monitor
---	---	---------

Cross Trainer: Low Risk

Finding	Issue	Who to remedy? Caretaker/Contractor
1	The instruction label provided has faded; an instruction label should be provided with each item of equipment in accordance with the requirements of BS EN 16630 – Provide appropriate instruction labels	Office
2	There are fixings missing on the item – Replace all missing fixings.	Contractor
3	There are inserts missing – Replace missing inserts.	Contractor
4	The bearing is showing signs of wear – Monitor for any further deterioration and replace as required	Monitor

Skier: Low Risk

Finding	Issue	Who to remedy? Caretaker/Contractor
1	There is a bolt cap cover missing or damaged on item – Replace missing or damaged bolt cap covers.	Contractor

Cycle: Low Risk

1	The instruction label provided has faded; an instruction label should be provided with each item of equipment in accordance with the requirements of BS EN 16630 – Provide appropriate instruction label	Office/ Caretaker
---	--	-------------------

Napoleon Drive

Gate: Low Risk

Finding	Issue	Who to remedy? Caretaker/Contractor
---------	-------	--

1	The paint is flaking off the metal work – Rub down and repaint.	Community Payback
---	---	-------------------

Maintenance Gate: Low Risk

Finding	Issue	Who to remedy? Caretaker/Contractor
1	The gates were correctly padlocked at the time of the inspection, so they were unable to check opening – Ensure there is a 12mm gap throughout the full range of motions on gate and between leaves.	Contractor
2	The gate has no drop bolt sleeves or drop bolts fitted – Provide drop bolt sleeves and/or drop bolts	Contractor
3	The paint is flaking off the metalwork – Rub down and repaint	Community Payback
4	Cable Ties are present and there are sharp projecting ends – Remove redundant cable ties	Caretaker

Fence – Bow Top: Low Risk

Finding	Issue	Who to remedy? Caretaker/Contractor
1	There is some damage to the fence sections – Monitor for further deterioration and repair as required.	Monitor
2	The paint is flaking off the metalwork – Rub down and repaint	Community Payback

Spring Bee: Low Risk

Finding	Issue	Who to remedy? Caretaker/Contractor
1	The hand/foot grips rotate and may cause unexpected of the user – Secure hand/foot grips to stop rotation.	Contractor
2	Several fixings have worked loose – Secure all loose fixings.	Contractor
3	The paintwork on the spring has been damaged or worn exposing the metal underneath which is rusting – Treat rusting components and repaint.	Caretaker

Spring Ladybird: Low Risk

Finding	Issue	Who to remedy? Caretaker/Contractor
1	The hand/foot grips rotate and may cause unexpected movement of the user – Secure hand/foot grips to stop rotation.	Contractor

2	The paintwork on the spring has been damaged or worn exposing the metal underneath which is rusting – Treat rusting components and repaint.	Caretaker
---	---	-----------

Toadstools: Low Risk

Finding	Issue	Who to remedy? Caretaker/Contractor
1	There is algae or moss on the surface of the equipment – Clean and treat appropriately	Caretaker

Spring See Saw: Low Risk

Finding	Issue	Who to remedy? Caretaker/Contractor
1	The spring cover is damaged split or missing – Replace the cover	Contractor
2	There are fixings missing on the item – Replace all missing fixings	Contractor

Spring Ladybird: Low Risk

Finding	Issue	Who to remedy? Caretaker/Contractor
1	The hand/foot grips rotate and may cause unexpected of the user – Secure hand/foot grips to stop rotation.	Contractor
2	The paintwork on the spring has been damaged or worn exposing the metal underneath which is rusting – Treat rusting components and repaint.	Caretaker

Play Panel – Spooky Pairs Game: Low Risk

Finding	Issue	Who to remedy? Caretaker/Contractor
1	Missing components – Consider replacing. No Action required	Monitor
2	The item has been damaged – Monitor and replace as required	Monitor

Bay Swing: Low Risk

Finding	Issue	Who to remedy? Caretaker/Contractor
1	Parts of the steel structure protrude beyond the protected elements of the seat and have no impact attenuating protection for users passing by or	Office

	underneath – Refer to manufacturer for confirmation of design risk assessment	
2	There is some notable evidence of chain wear – Monitor for any further deterioration and replace when 40% worn	Monitor
3	There is some wear to the shackles – Monitor for any further deterioration and replace when 40% worn	Monitor
4	The bushes are showing signs of wear – Monitor for any further deterioration and replace as required	Monitor
5	The fixings have corroded excessively – Replace all corroded fixings	Contractor

Train: Low Risk

Finding	Issue	Who to remedy? Caretaker/Contractor
1	There is or are fixings missing on the item – Replace all missing fixings	Contractor

Spinning Pole: Low Risk

Finding	Issue	Who to remedy? Caretaker/Contractor
1	The paintwork on this item has been damaged or worn exposing the metal underneath which is rusting/corroding – Treat affected areas and repaint	Caretaker

Bench: Low Risk

Finding	Issue	Who to remedy? Caretaker/Contractor
1	The paintwork on this item has been damaged or worn exposing the metal underneath which is rusting/corroding – Treat affected areas and repaint	Caretaker

Southons Field

Picnic Table: Low Risk

Finding	Issue	Who to remedy? Caretaker/Contractor
1	There is algae or moss on the surface of the bench - Clean and treat appropriately	Caretaker

Activity Trail: Low Risk

Finding	Issue	Who to remedy? Caretaker/Contractor
1	There is some trimmer/machinery damage apparent on the posts, this can penetrate the preservative applied and accelerate the rotting process – monitor for any deterioration (rot) and replace as required.	Monitor
2	There is some evidence of rot in the timber – Monitor for further deterioration and replace as required	Monitor
3	There is algae or moss on the surface of the equipment – Clean and treat appropriately.	Caretaker
4	There are bolt cap covers missing – Replace missing bolt cap covers	Contractor
5	There are sharp protruding staples on the item – Remove the staples	Caretaker
6	The tree canopy overhangs the equipment and is less than 2m away – Lift tree canopy to ensure a minimum clearance of 2m	Groundsman

2 Bay Swing: Low Risk

Finding	Issue	Who to remedy? Caretaker/Contractor
1	There is moderate damage to the surface – Repair the damaged areas	Contractor
2	There are caps missing from the underside of the seats – Replace caps under the seats.	Contractor
3	There are projecting bolt threads present – Remove excess thread length and deburr or provide cap	Contractor
4	There is some notable evidence of chain wear – monitor for deterioration and replace when 40% worn.	Monitor
5	The swing seat connectors have some wear present – Monitor for any further deterioration and replace when 40% worn	Monitor
6	There is some wear to the shackles – Monitor for further deterioration and replace when 40% worn	Monitor
7	The bushes are showing signs of wear – Monitor for further deterioration and replace as required	Monitor

AMENITIES MEETING ACTION LOG 2026

Action No.	Minute Item No	Action	Allocated To	Status	To Do
A1		Allotments	Rachel and Cllrs	Awaiting legal issues to be sorted	
A2		Solar Panels at Public Conveniences	Rachel and Cllrs	Awaiting legal issues to be sorted. Licence received and to be taken to the next Full Council meeting to be signed by the Clerk and Cllr(s).	
A3		Changing Room Refurbishment	Rachel and Ali	Still on Full Council agenda	
A4	067/26	Purchase of Storage Container for Southons Field	Rachel and Ali	Cllrs agreed for a 20ft storage container to be purchased from Lawrence Containers. This will replace the metal shed. Clerks to wait till Spring when the weather is drier and the Caretakers will dismantle. A skip to be ordered and installed on Southons.	Paused until Spring 2026
A7	068/26	Dog Signage at Cemetery	Rachel	Cllrs agreed for additional signage at the Cemetery and the Deputy Clerk has ordered these. Once received they will be installed on stakes near the gap of the hedging.	Dogs signs ready to be installed by Caretaker. The Deputy Clerk to inform the correct locations.
A8	069/26	Baby Changing Facilities at Public Toilets	Rachel	Cllrs agreed for the Clerk to purchase baby changing facilities at the Ladies Public Toilets. However, upon inspection, the Clerks recommended that baby changing facilities should be made available in the Mens Toilets as well. The Deputy Clerk added to February Amenities Committee Meeting. Ecosan also contacted with regard to nappy disposal costs. Cllrs agreed for Clerks to purchase the facilities along with nappy bins to be regularly emptied.	The Clerks to purchase and discuss with the Caretaker about installation.