

AUTUMN 2024

MARDEN PARISH COUNCIL

NEWSLETTER



Oak at Herbert Hall - Copyright Helen Montague

A LOOK AT THIS ISSUE:

QUALITY GOLD AWARD - PAGE 2

PLANNING UPDATE - PAGE 4

MENTAL HEALTH UPDATE - PAGE 10

MARDEN AT CHRISTMAS - BACK PAGE



UPDATE FROM THE CHAIRMAN OF THE PARISH COUNCIL



Dear Residents,

Let's hope the wet start we've had to Autumn doesn't continue and that we don't suffer too much flooding this Autumn and Winter. If this does happen your volunteer Flood Wardens will be keeping an eye out and putting out road warning signs when roads are flooded. Please don't ignore them.

We were very sorry that Cllr Matt Besant has resigned due to relocation. His drive and enthusiasm will be much missed. We're delighted to welcome Cllr Paul Dobinson who was co-opted at the Full Council meeting on 13th August. Paul brings a wealth of experience having worked in Financial Services and is already getting stuck into things. We still have one vacancy. If you are interested in joining our team, please see below for more information.

I am very proud to be the Chairman of one of the very few Parish Councils in Kent to have been awarded Quality Gold Status. Apart from the prestige of receiving the award the process made us look long and hard at how we operate and deliver services to you. Much of what we achieve could not be done without the efforts of our Parish Clerk, Ali Hooker, who put in a lot of hard work and dedication in collating our Quality Gold Award application and identifying improvements to working practices. Our grateful thanks go to her for not only helping achieve this award but for her continued loyalty and dedication to

Marden. Christmas is not far away, and I hope many of you will join us to celebrate Marden at Christmas on Saturday 7th December. It's always a fun packed, community day and we look forward to seeing you there. All the information you need about the day is in this newsletter.

Wishing you all a Happy Christmas and peaceful New Year.

Best Wishes

Councillor Kate Tippen

Co-option

Having co-opted Paul we still have one vacancy and to make our team complete with eleven councillors, the Parish Council has the authority to co-opt another new Councillor onto the Parish Council. As a Parish Councillor you have the opportunity to influence change and instigate projects that have a positive impact on our community. Councillors come from all walks of life and have many different types of experience. If you are interested in joining our very committed team, you can find out more about the role of a Councillor, or if you wish to obtain an application form, please either call Ali or Rachel in the Parish Office on 01622 832305, or email: clerk@mardenkent-pc.gov.uk. Parish Council and Election information can be found at: bit.ly/MPCElectionInfo. Closing date: 30th November 2024.

GENERAL UPDATE

Local Council Award Scheme (LCAS) -

We are very excited and proud to announce that The National Association of Local Councils has accredited Marden Parish Council with the Quality Gold award – the highest achievement for a parish council to attain. There are three levels – foundation, quality and quality gold and in May 2020 we received the Quality Award status. LCAS has been designed to celebrate the successes of the very best councils and to provide a framework to support all local councils to improve and develop to meet their full potential.

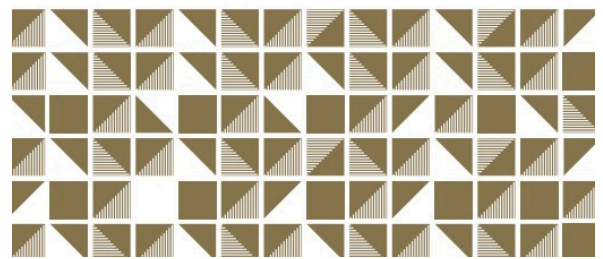
Receiving the Quality Gold Award is an excellent achievement demonstrating that we are at the forefront of best practice, have succeeded in good procedures in governance, community engagement and leadership. Furthermore, this award shows that Marden Parish Council has gone above and beyond it's legal obligations by leading the community and continuously seeking opportunities to improve and develop even further.

This award is a testament largely to our wonderful Parish Clerk – Ali Hooker and her hard work and dedication in collating our Quality Gold Award application and identifying improvements to working practices – and of course to the councillors who also helped especially our Chairman, Cllr Kate Tippen. Think we can give ourselves a big pat on the back!

We hope to have the certificate presented to the Parish Council at the November Full Council meeting by the Mayor of Maidstone, John Perry, and the Chief Executive of Kent Association of Local Councils, Charmaine Keatley.



Marden Parish Council



Parish Council Communications

We seek to provide residents with as much information as we can on the work that the Parish Council is undertaking in our newsletters, weekly e-newsletter, the village noticeboards, on social media and give village organisations the opportunity to report on what they are up to. We have already held a number of consultations, online surveys, questionnaires etc, but in the Spring newsletter we will be including a survey for residents to complete on how you feel about Marden, the community and facilities.

GENERAL UPDATE

Life is always so busy, but we'd like to encourage residents to read the newsletter (which is only issued three times a year) as it provides you with a lot of information on what is going on in the village. If residents need to raise any issues or have any suggestions, please pop into the Parish Office for a chat with Ali or Rachel. Alternatively, you can call them on 01622 832305 or email: clerk@mardenkent-pc.gov.uk or deputyclerk@mardenkent-pc.gov.uk. – they are available on Mondays, Tuesdays and Fridays from 10am to 12 noon in the Parish Office.

The Parish Council's Facebook page is also a good source of information, and it would be great if you could follow or give us a like on our page:
<https://bit.ly/MardenFacebook>

GET HOT OFF THE PRESS MARDEN VILLAGE NEWS!!

Sign up for the Marden Parish Council Weekly E-Newsletter here:

Use this QR Code on your mobile phone:

- Open your camera
- Hold it over the code
- Click on the link to browser
- Fill in your details



Alternatively, from your search engine type:
<https://bit.ly/MPC-E-NewsletterSignUp>
Or call or email Rachel on: 01622 832305 or deputyclerk@mardenkent-pc.gov.uk who can add you to the mailing list.

Volunteering – Shout Out!

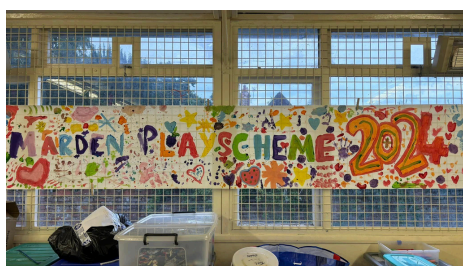
Volunteering to serve the community is not only beneficial to the individual, but it helps to create better communities for all. Sharing interests and building friendships could significantly improve your quality of life. In Marden parish we have many wonderful volunteers as councillors, charity trustees, the Church as well as a plethora of clubs, organisations and groups and help is always needed to keep these groups running as you will see in the articles below.

The Parish Council are involved in a number of events and projects, and it would be great if residents could give us a helping hand. For example, the annual Spring Litter pick had a fantastic turnout to help clean up our village and country roads back in March giving everyone who participated a sense of pride in their parish.

Volunteers are always welcome especially for speed watch (see article on Speeding), the Marden Parish Emergency Plan, or to help deliver the Parish Newsletter which goes to every household in the parish. If you would like to volunteer just a little bit of your time, please email Ali: clerk@mardenkent-pc.gov.uk or Rachel: deputyclerk@mardenkent-pc.gov.uk Every little bit of help is much appreciated.

Marden Summer Play Scheme

Once again, the Summer Play Scheme was a resounding success with up to 48 children attending each day and it was a shame that we were unable to accommodate all the children that applied. Due to being at the Scout HQ numbers were restricted, but hopefully in 2025 it can resume at Marden Primary Academy when we will be able to increase our numbers again.



Congratulations to Jen Ward and her team on running such a successful scheme. The staff worked so hard and provided a lot of activities, sporting events and general fun for all those who attended.

PLANNING UPDATE

Adoption of the Maidstone Borough Local Plan Review 2021-2038

The Maidstone Borough Local Plan Review 2021-2038 and associated Policies Map were adopted by MBC in March 2024. The Judicial Reviews for both Heathlands (Lenham) and Lidsing have been refused. MBC officers are in the process of preparing the Supplementary Plans for these two sites. You can view copies of the plans and associated documents in Marden Library or online: <https://bit.ly/MBCPlanReview>

Marden Neighbourhood Plan Review (MNP) – Regulation 14

As previously advised, the Neighbourhood Plan Steering Group has been reviewing the MNP and cross-referencing any changes to MBC's adopted Local Plan and variations to the National Planning Policy Framework (NPPF). Maidstone Borough Council have commented on our proposed amendments, and we are hoping it does not need to be taken to full referendum but will probably need to go to examination.

The Parish Council will be holding a Regulation 14 consultation on 22nd March 2025. Please put this date in your diary and further information will be available in the next newsletter. The MNP is a legal document and is part of the planning policies within MBC. Councillors refer to the policies when considering planning applications to ensure they are compliant.

Land East of Albion Road and North of Copper Lane

The above application has now gone to appeal, and Marden Parish Council submitted an extensive written representation to the Planning Inspectorate. The developer then sent additional information regarding the proposed highway/footway for the site which was discussed at the EFCM on 24th September and our further comments were submitted to the Planning Inspectorate.

PLANNING UPDATE CONTD

Land East of Albion Road and North of Copper Lane Contd

Thank you to all those residents who attended this meeting and expressed your views on the proposed highway/footway.

MPC will send a representative for the first day of the inquiry in November to speak but would not be a Rule 6 party. To view this and for further information please visit: <https://bit.ly/CopperAlbion>

Land South of Howland Road

An outline planning application for access and scale was discussed at an MPC Planning Committee on 6th August for the erection of nine dwelling houses. This was submitted under the Maidstone Local Plan Review Policy for Affordable Local Needs Housing. Whilst we recognise the need for local affordable housing, for a number of reasons the Parish Council recommended refusal, along with a number of residents, and Maidstone Borough Council have now refused the application. You can check out the application: <https://bit.ly/HowlandRoadPlanning>

Reed Court Farm – Proposed Chicken Farm, Hunton Road

This contentious planning application has been rumbling on since 2020. The application is for the erection of a new free range egg farm consisting of 2 hen houses with extensive outdoor ranges and fencing, formal vehicle access from Hunton Road and associated parking,

landscaping, woodland and tree planting, drainage and other associated works. The applicant's agent has submitted the information and details requested by Natural England, the clarification over Flood Risk and the other issues raised at MBC's Planning Committee. However, this information will not be placed on the Planning Portal until MBC is satisfied with all the documentation and a re-consultation will need to take place. Therefore, it is envisaged that the application won't be reported back to MBC's Planning Committee until the New Year. You can check it out on the MBC Planning Portal: <https://bit.ly/ReedCourtPlanning>

Marden Primary Academy Planning Application

Councillors discussed this planning application at an EFCM on 24th September for the construction of a new single storey school building (four classrooms, dining hall, kitchen, and staff room), hard surfacing play areas, provision of 11 additional car parking spaces, and the stationing of two storey temporary classrooms. You can see our response at: <https://bit.ly/MPCPrimaryResponse>

Proposed Solar Farm Pattenden Lane

The site being considered for this solar proposal is west of Pattenden Lane Industrial Estate. ILOS New Energy UK Ltd held a public drop-in session on 14th October at Marden Sports Club before the pre-planning application to evaluate the community's comments and suggestions.

PROJECT UPDATE

Marden Infrastructure Spend Plan (ISP)

An ISP is a wish list of the projects that are of priority to your community, and it should address the key issues that are important to the area. We held another consultation in March and have taken residents views and comments into consideration and added your suggestions: extending CCTV and lighting on Rookery Path, picnic benches on Marden Playing Field. You can find the document on our website: <https://bit.ly/MPCWishList> If you wish to add something, please forward your suggestion to Ali at: clerk@mardenkent-pc.gov.uk

Allotments at Highwood Green

Once again, many apologies to all those residents who are still waiting to get to work on their plots but unfortunately, movement with Redrow has been stalled. The Parish Council thought we were finally making progress and held a meeting in June with Redrow where they promised to send options for the car parking spaces, but we still have not heard anything. However, the S106 Deed of Variation wording has now been agreed for the transfer of the land to the Parish Council.

Kent & Medway Resilience Forum - Are You Emergency Ready? Five Steps To Become Better Prepared

The 5-step guide is designed to highlight to residents what you can do

to help yourself become more self-resilient and take simple actions so you are better prepared for emergencies that may impact you and your community such as severe weather, flooding or a utility outage. The campaign outlines practical tips that could prove very useful should the unexpected happen:

- Step 1 – Consider making an emergency grab bag – torch, important documents, keys, medication, first aid kit, toiletries etc
- Step 2- Make a Household Emergency plan for your home and practice it with your household to include contact numbers, how to turn off your gas, electricity and water, and sources of information and advice.
- Step 3 – Sign up for weather and flood alerts such as the Met Office weather alerts: www.metoffice.gov.uk and Environment Agency Flood Warnings: www.gov.uk/sign-up-for-flood-warnings
- Step 4 – Check your flood risk – check your home’s flood risk by visiting the Environment Agency website: www.gov.uk/check-long-term-flood-risk

For more information, visit: www.kentprepared.org.uk/5-steps



PROJECT UPDATE

Marden Parish Council Open Space Byelaws

The Open Space Byelaws for the Playing Field have been reviewed and updated and will be extended to cover Southons Field. The Parish Council will undertake a public consultation on 22nd March 2025 and will then publish an assessment on our website prior to submitting an application to the Secretary of State for approval.

Byelaws are local laws made by councils under an enabling power contained in other legislation requiring something to be done – or not done – in a specified area. They are accompanied by some sanction or penalty for their non-observance, although the main aim is to discourage nuisance activities in the first place.

HIGHWAYS & PUBLIC TRANSPORT

Speeding in the Parish – Keep Your Speed Down!

Everyone bemoans speeding which is certainly a big issue in our village. Efforts have been made to try to restrict speeding with a rotating Speed Indicator Device in Howland Road, Goudhurst Road and Thorn Road (Kent Highways advised there is not a suitable position where a speed camera can be positioned in other locations at the current time) and all the speed limit signs. Police are

considering deploying their mobile ANPR cameras in Marden.



If you see a speeding vehicle, please make a note of the registration number and inform the Police. There have been some recent incidents probably caused by speeding notably the accident on the dangerous bend in Thorn Road where the vehicle damaged the village gateway and ended up in the ditch (vehicles frequently drive around this bend at too high a speed). Our Police Beat Officers do regular speed checks particularly in Pattenden Lane where speeding is a big issue.

Marden Speed Watch

So, the good news is that Marden Speed Watch is now up and running. In July, Cllrs Mike Summersgill and Kate Tippen plus one resident undertook the first Marden Speed Watch in Goudhurst Road. Two vehicles were noted exceeding the speed limit – one doing 44mph and their details have been passed to Kent Police.

So if you are concerned about speeding around the village, then why not sign up for Speed Watch as we need more volunteers? You will need to undertake some online training, but for further information, please contact the Parish Office.

Parish Council Highways Improvement Plan (HIP)

As you are aware, the Parish Council has developed a HIP after public consultation. As a result of a resident's concern, the issue of speeding in Battle Lane has now been added. Another meeting was held in June with Kent Highways to give an update on where they are with a few priority items, but we are still waiting for further information. To view the updated HIP and information on Marden's priority list please visit:
<https://bit.ly/MPCHIPAug2024>

DRAINAGE & WATER

Maynards Sewer

The Parish Council has been investigating the issue with the Maynards sewer frequently overflowing and trying to track down the source of this ongoing problem. This has possibly been caused by a storage 'pipeline' not being constructed and adopted when the Parsonage development was built. We wrote to Southern Water in March and finally received a response in August which has now been passed to their Wastewater Technical Team for comment.

Southern Water Works in the Village

As you are probably aware, Southern Water have invested £865,000 in the current financial year into reducing sewer inundation and foul flooding in Marden. Since late July, Phase 1 of the remedial works to Marden's foul sewerage system has been taking place to reline the sewers to address the

groundwater infiltration issues within the sewer pipes and will deal with the rising mains. They plan to re-seal or re-cover selected manholes under the flood line to address the entry of surface water into the foul sewer via manholes, install new flow monitors into the sewer network so they can assess the impact of flows from any new developments on the foul sewer network and carry out connectivity surveys to see if rainwater from roof tops is going into the wrong drainage system.

If the proposed development in Albion Road/Copper Lane does finally get the go ahead (which is currently at Appeal), an additional pumped discharge into Albion Road would need modelling to prove the Marden sewerage network has capacity.

If all these works do all go ahead, it will mean that Marden's infrastructure will be working much better. You can find information on local drainage and flooding on the Parish Council website:

<http://bit.ly/MPCDrainageandFlooding>

OPEN SPACE

Marden Playing Field Changing Room

Back in March the Parish Council held a public consultation on the proposals for the old changing rooms in the Playing Field and the majority of responses were in favour of refurbishing the building as a community space.

OPEN SPACE CONTD

Marden Playing Field Changing

Room Contd

A Statement of Community Involvement and Planning Statement for the changing rooms application was agreed at the Full Council meeting in July and the next step is to submit a planning application to Maidstone Borough Council which Councillor Matt Besant has kindly prepared. It was agreed that the opening hours would be: 1st April to 30th September - 9am to 9pm with shorter opening hours on Sundays; and 1st October to 31st March - 9am to 6pm. We have tried to accommodate all residents' comments in our planning application and careful consideration will be given to lighting. Hopefully we will obtain a grant for solar panels to be fitted to the roof.

Marden Playing Field, Southons Field & Napoleon Drive Play Area

The Parish Council agreed for a resident to install a Memorial Bench by the Napoleon Drive play area to match the existing benches in the Playing Field and what a lovely gesture for the family to remember their loved one. At the request of residents, two robust football goals will be placed in the Playing Field to help those keen young footballers to practice their soccer skills, and our County Councillor Lottie Parfitt has agreed to donate towards the cost of the goals. As the footfall in the Playing Field is high, the Parish Council will be installing a Noticeboard at the

Playing Field with the help of a grant from MBC.

It's great to see so many families enjoying Southons Field and the various events that took place there including a number of children's birthday parties. The Rugby Taggers have also been using the field for their Saturday morning sessions whilst the building works at Marden Primary Academy have been taking place. It's a great place to relax and take in the Autumn colours and enjoy nature. If you would like to hire or use the field, please email Rachel: deputyclerk@mardenkent-pc.gov.uk. Autumn/Winter opening hours are: November-January - 8am-4pm and February-March - 8am-6pm (or dusk if earlier) but please remember it is a dog free space (apart from assistance dogs).

Marden Cemetery

The testing of memorials in Marden Cemetery is a legal requirement for the Parish Council and memorial testing has been undertaken of all the memorial stones to check whether any are unstable/unsafe. Unfortunately, some of the memorial stones have been deemed unsafe and a notice has been placed on each one. Grave owners have been contacted but for some of the memorial stones, a contact is unknown. Thank you to those grave owners who have taken action to make the graves safe, the remaining unsafe memorials will be staked and this process will be undertaken shortly.

HEALTH & WELLBEING

The Parish Council tries to promote health and wellbeing in the community and provide as much information as possible in each newsletter and on social media. We plan to update the Key Community Contacts list shortly:

Make Time for Your Mental Health

We all feel the stresses and strains that everyday life can put on us, that's why it's so important to make time for your mental health which is just as important as looking after your physical wellbeing. Mental health problems can affect any of us at any time in our lives - whether you are young or old. We know it can be difficult to talk about mental health and especially hard to talk to people or ask for help.

YOU ARE NOT ALONE!

**If you need urgent help for a mental health crisis or emergency, you should get immediate expert advice and assessment by calling:
NHS 111 Option 2.**

**It is important to know that support services are available for you to access whatever you're going through. You can find more info at:
<https://bit.ly/NHSMentalHelp>**

There's a lot of information out there to help you, but your first point of call for any non-emergency medical concerns should be your doctor. However, working out what to say to your doctor about your mental health can be daunting. Doc Ready is a free service which could help you prepare for your first visit. More info here:
<https://bit.ly/DocReadyHelp>

The NHS also offers a range of services and treatments for mental health some of which do not require a GP referral. For further help, the website is:
<https://bit.ly/NHSTalking>

Kent County Council has an abundance of information to help with mental health issues and there is an online directory:
<https://bit.ly/KCCMental>

Mental Wellbeing Hub - Further information on website here:
<https://bit.ly/MentalHub>

Release the Pressure - if you need to speak to somebody urgently, call 0800 107 0160 and select option 1 to speak to someone in their highly trained and experienced helpline team. The Release the Pressure phone line is for people over 16 in Kent and Medway and is free, confidential and open 24 hours a day, 365 days a year. The service is provided by an independent charity called Rethink Mental Illness. You can also webchat with the Release the Pressure helpline:
<https://bit.ly/ReleaseKent>

HEALTH AND WELLBEING CONTD

Samaritans – you can call the Samaritans for free on 116 123 for 24-hour support and they also offer support by email, letter and face-to-face. Check out:
<https://bit.ly/HelpSamaritan>

Kent and Medway NHS Partnership Trust (KMPT) also provide secondary mental health services and support including community mental health, crisis resolution and telephone support. Check out:
<https://bit.ly/KMPThelp>

Children and young people's mental health services offers help and support if you are feeling anxious or stressed, down or low and if you need help now check out:
<https://bit.ly/MentalHub>

Kent and Medway Safe Havens – if you are feeling distressed, frightened, overwhelmed or you are unsure where to turn to get support, check out:
<https://bit.ly/KandMSafeHavens>
Safe Havens offers out-of-hours mental health support to anyone over 18 in Kent and Medway.



Maidstone Family Hubs

As you will be aware, the Marden Children's Centre has been closed by KCC who have now implemented Family Hubs across the County. Marden Parish Council held a meeting with the Family Hub District Manager in the Summer who explained how the outreach community service for residents is going to be delivered, but they don't have the resources to deliver much in the rural areas for services such as Stay & Play and Baby Massage.

There is now a Community Development Worker who has been tasked with seeing what can be done in rural communities and is attending the Marden Food Bank, the Community Forum and Police Surgery to get a feel of what is happening. She is looking at options for some local outreach sessions and parent workshops. Currently the only outreach service being provided in Marden is Health Visitor appointments at Marden Library on a Monday, but this is not a drop-in service – by appointment only.

With Kent Family Hubs, you can find advice, support and services to help throughout your family journey, from newborns to 19-year-olds, or up to 25-year olds with special educational needs and disabilities (SEND). Check out: <https://bit.ly/KCCHubs> or to follow the latest news, classes and information check out their Facebook page.

Family Hubs also have a Digital Team which has an abundance of information and for young people there is an Instagram page: [maidstonefamilyhubs11to19](https://www.instagram.com/maidstonefamilyhubs11to19).

You can find your nearest Family Hub on the website or there are various hubs in Maidstone at Park Wood, Greenfields, South Borough and West Borough.

KCC Community Warden Service – Sandra Edmonds, Team Leader, KCC Wardens, Tonbridge, Maidstone & Malling

I am sure you will join with me in wishing Mira Martin all the very best as she has now left the Community Warden service to spend more time at home. Due to current staffing constraints, we do not have a full-time warden in Marden, but we will be covering referrals made to the service by outside agencies so you will still see a vehicle around. We receive referrals from the Medical Centre, Social Services, Involve and if there is a specific issue with a resident e.g. help completing a form, please contact the Parish Council who will liaise with us, and we will help out. If you do have any concerns, please do let your Parish Council know, alternatively if you have concerns re Crime or ASB please report this into Kent Police via the online reporting tool or live chat on Kent Police Website or by calling 101 to report a concern or 999 if a crime is in progress.

Marden Medical Centre Update

Dr Julie Morgan

RSV Vaccination – As from September 2024, those who turn 75 and those age 75 to 79 will be eligible for a free vaccine to protect them from respiratory syncytial virus (RSV). Pregnant women from 28 weeks of pregnancy will also be eligible. RSV is an infectious disease of the airways and lungs and often causes symptoms similar to a cold, including: cough, sore throat, sneezing, a runny or blocked nose. It can also make you become wheezy or short of breath and lead to pneumonia and other life-threatening conditions. There is no specific treatment, and most infections will get better by themselves. Every year thousands of older adults need hospital care for RSV, and some of them will die. RSV can be more severe in people with medical conditions such as heart or lung disease or a weakened immune system.

We are contacting all eligible patients and inviting them for vaccination. Please take advantage of this free vaccination when you are called and help to protect yourselves, your family, friends and your community!



HEALTH & WELLBEING CONTD

Marden Medical Centre Update

Contd - Dr Julie Morgan

General Practice Under Threat - every practice across England is struggling to keep its doors open. We value our patients and we know that most patients value us too, especially when they need us regularly. You know we can deal with most of your health problems, keep you out of hospital, and have your best interests at heart. General practice should be at the heart of every community - keeping patients safe, and providing strong foundations for the rest of the NHS. A strong general practice keeps people healthy and gives them the care they need in their community. And it takes the pressure off hospitals and specialist services, saving money in the longer term. But did you know that your practice receives just £107.57 per year for each patient, whatever their health needs. That is less than the cost of an annual TV licence. It's just 30p a day for every patient registered with us - less than the cost of an apple.

We believe general practice deserves a bigger slice of NHS funding so we can train and hire more GPs, deliver the services you require and make it easier for you and your loved ones to get appointments to see your GP and practice team.

Following the third consecutive NHS England contract imposition the BMA launched a non-statutory ballot.

BMA Member GP Contractors were asked to vote on the question: 'Are you prepared to undertake one or more examples of collective action as outlined in the BMA campaign to Protect your Patients, Protect your Practice?' 98.3% of BMA Member GP Contractors have voted "Yes" to taking part in collective action to protect patients and protect practices.

The action we will be taking does not mean strike action but is designed to push back at unnecessary bureaucracy which in some cases is imposed on us and can act as barrier to providing care for our patients. We will also be limiting patient contacts per clinician to the recommended safe maximum of 25 per clinician: this is better for patients and clinicians. Once the daily maximum has been reached patients will be diverted to urgent treatment centres. Please remember we are on your side - GPs want the same things that you do. We believe nobody should struggle to see their family doctor. For more information:

<https://bit.ly/BMAGPS>

New Paramedic Practitioner - In line with National policy to improve urgent same day access, we have recently recruited a third Paramedic Practitioner. We are delighted to welcome Shirley Bellhouse to the team. Shirley is an experienced Paramedic Practitioner and has most recently been working in an urgent treatment centre where she has gained experienced in many of the

common conditions we see in general practice.

This means that most days we will have 2 paramedics and a duty doctor providing urgent care. While your usual doctor may not be available urgently, each doctor now has more pre-bookable appointments available.

Warm Hubs

It is saddening to hear about the Government's Winter Fuel Payments being restricted only to state pensioners who receive benefits. Many pensioners rely on extra financial support to help cover the cost of higher bills during the winter months.

There are a number of places in the village where residents can go in the winter such as the community lunches that Janet McIntosh organises some Mondays, the Village Café on a Friday morning, sessions in the Library such as games & chat on Tuesdays 2-4pm, stay & chat on Thursday at 10am (further information below). Marden Village Club is kindly opening its doors again as a Warm Hub on Thursdays from 10am to 1pm.

Marden Charity is here to help you Registered with the Charity Commission 1183743

The Marden Charity is up and running for the benefit of all Marden residents and Marden voluntary organisations. Since the charity was set up in 2020 Trustees have approved several grants to

individuals and village organisations, including the Marden Food Bank to support its vital work in the village.

The objective of the charity is to help Marden residents who are struggling financially by making grants of money available for the purchase of specific items, when support is not available elsewhere. The charity also supports village organisations to assist with specific projects for the benefit of the people of Marden. What type of things are covered? This is a grant to help with for example:

- Clothing e.g. school uniform, shoes
- Glasses
- Hearing aids
- Household equipment e.g. fridge, washing machine
- Education assistance e.g. text books, outings, training courses
- Specific projects village organisations are running for the benefit of Marden residents

How much can I apply for?

All grant payments will be at the discretion of Trustees a maximum grant of £100 will be payable to individuals and £500 to village organisations.

How can I apply?

Forms for both individuals and organisations can be downloaded from the Marden Parish Council website.

HEALTH & WELLBEING CONTD

Marden Charity Contd

If you are an individual applying for a grant the form will need to be countersigned by someone in a professional capacity who knows about your circumstances or one of the charity's trustees (you will find their names on the website).

If you are applying on behalf of a village organisation you will need a trustee to countersign your application.

All the information about the charity, including details of the trustees and application forms can be found on the Marden Parish Council website: <https://bit.ly/MardenCharity>

For any further information please email: mardencommunitycio@gmail.com. All applications are dealt with in the strictest confidence and comply with all data protection requirements.

KCC - UK Government Household Support Fund

The Government advised that a further extension to the Household Support Fund will run from September 2024 until March 2025. The scheme supports vulnerable Kent households in need of help with significantly rising living costs such as those who struggle to heat their homes or cannot afford essential items over the colder months.

Once details of the extension are confirmed, KCC will publish information on any further support schemes delivered by them on behalf of the government - look out for more information at: <https://bit.ly/KCCHouseholdSupport>

KCC Other Cost of Living Support

If you have money worries or are looking for ways you can make your money go further, KCC can help you to find your way through to the advice and support available. Check out: <https://bit.ly/KCCCostofLiving>

ReferKent

ReferKent is an interactive online referral system that aims to strengthen referrals across Kent for adults and families. It allows users to refer to organisations directly and help those who are experiencing or are at risk of hardship.

The system is available on mobile and desktop devices; free for organisations who support Kent residents; quick, GDPR-compliant and secure; and supported by the Helping Hands Scheme. It's easy to track and check referrals to make sure that residents are being helped by the right people. Before the introduction of ReferKent, organisations sent residents from one to another. Residents were often left feeling deflated and falling further into hardship. We hope our system will bridge the gap between signposting and referring. Check out: <https://bit.ly/KCCReferKent>

Imago Support for Charities and Community groups

Imago are delighted to be providing support to frontline not-for-profit organisations including registered charities, CICs and community groups in Maidstone and the surrounding areas. This is being achieved through funding from Kent Community Foundation. Organisations can access bi-monthly networking meetings, a newsletter, one to one sessions focussing on your organisations individual needs and training opportunities.

If you are involved with a not-for-profit as a trustee, director, volunteer, staff member or other role and would like to know more about how we can help or to join one of our networking meetings, please contact Lysette D'Urso at:
charitysupport@imago.community

Imago provides support and opportunities to people, families, and communities across Kent, East Sussex, Medway and South London. Our services focus on improving health and wellbeing, tackling loneliness, building social and educational opportunities, and helping people access the right support. To find out more go to:
<https://www.imago.community/>

Digital Kent – IT Help for Patients

Digital Kent is now offering monthly Digital Hub support sessions at Marden Library. If you need help or know someone who needs help using the NHS app or generally getting online

you can book a free 30-minute session. Either call 03000 410 950 or book online – if you need assistance, please call the Surgery and they will help book you in. More info at:
<https://bit.ly/DigitalKentEvents>



Digital Kent has been funded by NHS Kent & Medway Integrated Care Board to target inequalities for patients across Kent and Medway. Patients can contact the service themselves or be referred for digital support and skills, hardware and connectivity to use online health services. If you would like this help, please click on the link for more information:
<https://bit.ly/DigitalKentProgramme>

Marden Dementia Friendly Community – Rachel Chacon

Marden DFC Monthly lunches are continuing as per the posters placed in the planter by the village phone box and in the library, church entrance and Marden Village Club. We will also be putting our posters on our new Facebook page. Just search for Marden Dementia Friendly Community to find us.

HEALTH & WELLBEING CONTD

Marden Dementia Friendly Community Contd - Rachel Chacon

Our very popular exercise class is sadly going to be finishing on Friday 15th November as the lovely Millie is going on her travels and Hamish is not able to fill the gap. Please if anyone who is interested or knows someone who can follow in these much-loved footsteps, please contact us. We would like to continue the classes and are even looking to start a second class at the other end of the village, maybe the Vestry Hall, earlier in the week. Watch this space, we will find a solution!

In the meantime, please remember that the latest research is showing that 45% of cognitive issues can be slowed or even prevented through regular social interaction.

This is the most complicated activity the brain engages in and is an excellent exercise for our neurons! Keep an eye on what's on in Marden through the local library and community facebook pages. Or just go for a walk in the park and say hello to someone you don't know ... It will make all the difference to someone's day.



If you are living with dementia, you are entitled to apply for a grant to help you with any extra expenses or maybe just to treat yourself to a special day out or if you wish to be added to our mailing list, please email: mardendfcinfo@gmail.com or call Rachel on 01622 831941 for more info.

Alzheimer's and Dementia Support Services (ADSS)

ADSS delivers a range of services to people affected by dementia through two service lines 'Dementia Care' and 'Dementia Support'. Dementia Support is there to ensure people understand what dementia is, what support is available, help people build peer networks, but most importantly to have fun and live a fulfilling life. Working on behalf of Kent & Medway NHS each Dementia Co-ordinator works closely with a group of doctors' surgeries (PCN). They identify the patients with dementia and then conduct a holistic assessment and create a person-centred support plan. You can call the Dementia Co-ordinator line on 0800 035 2221 or email: referrals@alz-dem.org Check out: <https://www.alz-dem.org/> Please contact your GP surgery and ask them to refer you directly to ADSS. There is a West Kent Drop-in at Paddock Wood Community Centre every 4th Friday of the month from 2pm-4pm. You can drop-in for support, advice and if you have concerns for anyone you know affected by dementia.

Come & Sing Group – Sarah Emmanuel

Come along and meet people, make new friends, and raise your voice together in song - all are welcome. Come & Sing runs on alternate Thursdays at 2.30pm in the Vestry Hall with singing followed by tea, cake and time together. £1 per session to cover costs. Improve your breathing and well-being, enjoy new songs, rediscover old ones and have fun! Contact Sarah on 01622 832925 or Marden Medical Centre 01622 831257. Here's the dates for the rest of the year: 7th and 21st November / 5th and 19th December.

Marden Foodbank – Donations Urgently Needed! – Rev Nicky

The Foodbank runs out of the Vestry Hall every Monday between 9.30am and 12 midday. Anyone in need of food is welcome to come along and receive a bag. The Parish Council would like to thank all the volunteers who work so hard to help families in the village.

We would be grateful for donations of the following items: tea & coffee; milk, fruit juice & squash; tinned soup and vegetables (carrots, potatoes, sweetcorn etc); tinned tuna; macaroni cheese, tinned ravioli etc; tinned meat or pies; jars of pasta or curry sauce; pasta and rice; tinned puddings and custard; jam; shampoo; soap; toilet rolls.

All donations can be dropped to the Vestry Hall on a Monday morning or left on the Vicarage doorstep at any time.

For further information about the foodbank please contact Kathy Young on 01622 831890 or email: office@mardenchurch.org.uk To make a monetary donation, you can place cash in a charity envelope with a yellow label and place in the charity box or the collection plate near the Church door; to make a single bank transfer or arrange a standing order with your bank, please email the Church Treasurer: treasurer@mardenchurch.org.uk

If you or anyone you know is in urgent need of help from the foodbank, please call Rev Nicky on 01622 831379 at any time. Thank you.

Marden Community Lunches

Thank you to Janet McIntosh for kindly organising the community lunches and the next one will be held on Monday 18th November at 12.30pm in the Vestry Hall. The aim is to provide a hot meal for the frail and elderly, especially those who live alone and would enjoy the company as well as the food. The cost is £5 for a home-cooked two course meal plus tea/coffee. For more info or if you would like to help, please contact Janet on 01622 831256.



SUSTAINABILITY, BIODIVERSITY & CLIMATE CHANGE

Parish Council Environmental Group

The Parish Council now has a statutory duty to exercise all its functions with regard to the purpose of conserving biodiversity and this includes raising public awareness of biodiversity issues in the community. Five Parish Councillors sit on the Environmental Group and two residents, and we would like to extend this group to any residents or businesses who would be interested in helping with the project. Please let Ali know if you're interested either by emailing: clerk@mardenkent-pc.gov.uk or ringing 01622 832305.

The Parish Council sent a letter in July to our new Weald of Kent MP Kate Lam asking where she stands on environmental issues and asking for her support for step-free access at Marden Station. At the time of going to print, we had not received a response.

Join Us in the Plastic Free Marden Campaign!

Are you passionate about tackling plastic pollution, particularly single-use plastic? Do you want to be part of a meaningful change in our village?

With the endorsement of Marden Parish Council who will lead by example, Elle Parker and Silvia Ferraro and a couple of councillors are forming a Steering Group to rally local residents, businesses, village

groups/clubs, Marden Primary Academy, the Scout Group etc to help reduce plastic waste and consumption.

We launched the project on 4th November, but we need your help! We're forming our very first steering committee and looking for enthusiastic volunteers of ALL ages and backgrounds. No experience is needed - just a drive to make a difference. If you would like to come along to learn more about how you can help shape our plastic-free future, please email: plasticfreemarden@gmail.com



Zero Waste on Wheels Van

Did you know about the Mobile Refill Van? Zero Waste on Wheels is a mobile refilling and recycling service providing sustainable refills of products such as detergent, cleaning and personal hygiene items, coffee and cooking oil etc.

Alicia, who runs the enterprising facility, ensures her service is as green as possible working with eco-friendly suppliers, offering biodegradable, sustainable products and operating a 'closed loop' service where containers are sent back to the company to be washed and reused.

SUSTAINABILITY, BIODIVERSITY & CLIMATE CHANGE CONTD

Zero Waste on Wheels Van Contd

Alicia also operates a recycling collection service and since June 2023 has collected almost 33kg of crisp packets which might otherwise have gone to landfill. The money raised goes to the Kent & Sussex Air Ambulance. She also collects dental product waste to help raise money for a local school. You can book a free home refill visit either by calling Alicia on 07379 241475 or email: zerowasteonwheels@gmail.com or check out their Facebook page.

Biodiversity Crime

The Environment Act states it's a criminal offence if a developer/management company is in breach of 10% Biodiversity Net Gain (BNG). Whilst MBC have an Enforcement Officer, it would be great if residents could keep a watching eye on any new developments and whether they have fulfilled their BNG commitment.

Marden Wildlife Update – Ray Morris

Most of Marden's hedgerows were recorded in the 1820 village Tithe Map, and some date back to when Marden was created by clearing the forest, originally known to the Romans as Anderida. A group of village people are enjoying privileged access to these hedges by checking out their health, and the trees and shrubs they contain.

If you'd like to join them and enjoy like-minded company, while measuring and counting what you find and making a simple record of it, please email Liz Taylor: ramshillhouse@btinternet.com and she will happily provide you with more information.

You are guaranteed an enjoyable country walk in parts of the village you probably haven't been to before. You'll be contributing to the historical recording of what's here - which is a start for conserving it for future generations. And it's great fun in the fresh air too! Learn more on the Marden Wildlife Facebook page, or email mardenwildlife@gmail.com.

POLICE & CRIME UPDATE

Drop-in Surgeries at the Village Café at the Vestry Hall

A couple of drop-in sessions for Marden residents were held in June and October in the Vestry Hall at the Village Café to enable residents to have a chat with your local Kent Police Beat team - PC Denney and PC Maskell along with representatives from Maidstone Borough Council, the Community Protection Team, Golding Homes, Marden Parish Council, etc.

These are really useful sessions and enable the police to hear first-hand your concerns. Please keep an eye out on social media and village notice boards for when the next drop-in surgery will be.

POLICE & CRIME UPDATE CONTD

Police Officers use My Community Voice to publicise their daily activity and which gives people a chance to respond and ask questions. The service sends updates about your local area directly from the police officers themselves and if you have anything else you would like them to investigate, please feel free to respond to any post they put up. You can sign up to receive alerts via: <https://www.mycommunityvoicekent.co.uk/>

Independent Advisory Group (IAG)

Maidstone Police have recently set up an Independent Advisory Group which is a forum for parish councils and other representatives to discuss local community issues in the Borough and how to gain community intelligence. Cllr Adrian Rabot attended the first meeting in September where he raised a number of local problems such as anti-social behaviour.

Kent Police have agreed to hold an open meeting on Tuesday 10th December from 6pm-8pm in the Old School Room, Marden Memorial Hall, Goudhurst Road, Marden – all residents are welcome to attend.

Safer Maidstone Partnership Ward Clusters

Cllr Adrian Rabot also attends the Ward Cluster meetings covering Marden, Yalding and Staplehurst the objective of which is to work collaboratively to identify, challenge and ultimately reduce community safety concerns within the cluster. They have recently discussed areas of concern such as fly tipping and litter, speeding in rural communities, parking around schools and inconsiderate parking on pavements, the apparent increase in drug taking and implied availability of drugs in the area and the issue of catapults (see article below). Cllr Rabot will also be meeting with the Beat Officers shortly to discuss a number of issues.



Crimestoppers

Speak Up and Stay Safe

Do you know something about crime in your community? People often feel that nothing gets done when they report a crime or get worried that if you report a crime the perpetrator of the crime will find out it is you, but rest assured your anonymity is 100% guaranteed with Crimestoppers. Call 0800 555 111 to contact the charity or check out: <https://crimestoppers-uk.org/>

However, please continue to report ASB and other non-emergency incidents to 101 or online at:

<https://www.kent.police.uk/>

The more that is reported, the more chance it will get dealt with. Incidents need to be reported for the police to focus on the issue.

Anti-Social Behaviour - Catapults

As a lot of you may be aware, there is an ongoing ASB issue regarding youths in the rural villages with catapults. They are increasingly used to injure or kill livestock, wild animals and even pets. This is fuelled by Facebook and other social media groups sharing images of animals that they have hit with ball bearings fired from these catapults. This is particularly nasty behaviour and has led to a number of arrests after the ball bearing hitting property or other people. We encourage you if you have young children or younger siblings/friends to ask them if they own a catapult, know someone who does or are on one of these social media groups and ask them to stop.

Catapults aren't considered offensive weapons and Helen Whately MP has raised this with both the Justice Department and the Home Office to see if the justice system can deter and stop catapults being used to kill animals and will keep pushing for stronger measures to stop the use of catapults to kill innocent animals. Catapults are lethal weapons and should be legislated as such so that the Police can use their powers properly against them.

Community Safety Survey

Community Safety in Maidstone is not the sole responsibility of any particular agency but is instead delivered through the combined efforts of a wider partnership through a Community Safety Partnership Plan. The Safer Maidstone Partnership works with local partners and communities to understand concerns and deliver four key priorities. They recently undertook a Community Safety Survey about the impact of crime and anti-social behaviour, your experience of reporting crimes, how safe/unsafe you feel etc.

The survey focussed on four key priorities: the impact of crime and anti-social behaviour where people live; residents experience of reporting crimes; how safe or unsafe people feel in Maidstone and how to get involved. In May 2025, the Safer Maidstone Partnership will decide the next 12 months of partnership activities to help reduce crime. These will come from residents' responses to the survey - understanding your crime concerns; and a review of crime and community safety data - to help make sure they continue to focus on crimes with the highest risk of harm.



POLICE & CRIME UPDATE CONTD

Country Eye

Unlike messaging using Social Media groups, the integrity of information from Country Eye has been accepted as evidential by the Crown Prosecution Service and is also GDPR compliant. Country Eye has links to the following Agencies: Kent Police, Kent Fire & Rescue Service, KCC Intelligence Unit, Special Branch, the 13 Borough/District Councils in Kent, Kent Heritage Watch, Kent Neighbourhood Watch, Kent Wildlife Trust and HGV Watch. Check out: <https://bit.ly/CountryEyeApp>



You can view the local crimes in the Marden and Yalding area by using the following link:

<https://bit.ly/KPCrimeMap>

This map uses data from local forces and the hotspots give only an approximate idea of where crimes happened – actual locations and details of crimes are kept anonymous and not all crimes that have occurred can be shown on the map.

YOUTH PROVISION

Online Social Group for Ages 18-25

Connect with your Community

Whilst KCC is no longer running a youth group in the village, the Weald Social Prescribing Group has launched a social group for young adults in the Weald area for 18-25 year olds. The group will run fortnightly on a Wednesday from 5.30pm-6.30pm. They aim to have fun and friendly meetups with people of a similar age who live in the Weald, have a chat, play some games and maybe a quiz or two. For more info, you can contact the Social Prescribing team or look out for the posters around the village or on social media where you can scan the QR code. Please email: westkenthealth.wealdpcn.socialprescribers@nhs.net

OTHER PARISH INFORMATION

Marden Memorial Hall

The original Memorial Hall building dates back to the 1860's, with additions in the 1930's and more recently in 2010. The Hall Trustees are regularly ensuring that maintenance is kept up to date and where possible improvements take place. This Summer has been very busy at the Hall as we have made a lot of improvements. Solar panels were fitted to the Hall roof a few years ago and now thanks to a grant from Maidstone Borough Council funded by the UK Government Shared Prosperity Fund we have been able to install solar batteries.

This means that going forward our electricity bills will be vastly reduced and of course improves our environmental footprint. The solar battery room has been fully fireproofed to the required British Standard. At the same time the Main Hall has been re-decorated and now looks much brighter and fresher. The floor is being re sealed during the October half term.



Anyone who has used the John Banks Hall will be aware that in hot weather ventilation can be a challenge. We have had the Velux windows in the roof updated and they can now all be opened from a simple switch by the door. The difficult to use remote controls are no longer needed. In addition, black out blinds have been fitted to the Velux which can be closed from the switch so that the room can be darkened for slide shows, exercise classes etc.

Outside we have been very conscious that the car park had some bad potholes, which we have now had filled in and two thirds of the car park resurfaced. We've also taken the opportunity to have the parking spaces re lined. Our thanks go to Marden in Bloom who have done such a great job with the garden area and planters at the front of the Hall.

Now for the not so good news. Due to unauthorised use of the car park, especially at weekends, the Trustees have reluctantly agreed that a chain with a padlock will be used to prevent entry to the car park, when the Hall is not in use at weekends. All hirers will be given the code to open the padlock.

The Memorial Hall complex consists of three halls all available for hire. If you are interested in hiring one of the halls please e-mail: mardenmemorialhall@yahoo.co.uk for more information.

KALC Community Awards

As reported in the Summer Newsletter, Eunice Doswell was presented with this award for devoting much time and expertise to the development of the History Group and the Heritage Centre on anything of historical interest in Marden. Each year at the Annual Parish Meeting the Parish Council makes an award to a resident who has shown outstanding service to the community.

OTHER PARISH INFORMATION CONTD

KALC Community Award Contd

This award is sponsored by the Kent Association of Local Councils, KCC and the High Sheriff of Kent. If you would like to nominate somebody in the village who you think has served the community and made a difference, please let Ali know: clerk@mardenkent-pc.gov.uk by 31st December 2024.

Marden Library

Marden Library is open Tuesday-Friday 10am-1pm and 2pm-5pm. Saturday 9am-1pm. If you would like to contact the library, please call 03000 420 684 or email: mardenlibrary@kent.gov.uk.

Please take a look at our event schedule:

- Tuesday: Games & Chat - 2pm-4pm. The game is currently Upwords but new suggestions are always welcome.
- Wednesday: Preschool story time - 2.15pm-2.45pm. First Wednesday of every month.
- Thursday: Stay & Chat - from 10am. Chat about days gone by with free tea and coffee.
- Homework Club: 3.30pm-4.30pm. Open to all children. Held weekly. Term time only.
- Friday: 0-5 Rhyme Time - 10.30am-11am. Held weekly. Term time only.
- Saturday: Lego Club 10am-11am. Held Weekly. Term time only.

Book Groups meet to chat over the book for that month. Held monthly. For more information on any of our services please pop in and see us.

Access to local studies is provided via the Marden Heritage Centre based in the library, service dependent on volunteer availability.

Marden Primary Academy

Hannah Penning, Principal

During the summer holidays, there has been a significant renovation project taking place at Marden Primary Academy. This work has increased the size of some of the classrooms, altered the layout of the building and given the building a full redecoration. It has also provided us with a lovely new entrance area and space for visitors to wait.

Following on from this work we are very excited that we will be having a new library installed, hopefully during the October half term, that will provide lots of comfortable seating and book storage. We hope this will continue to support the children's love of reading.

This year we are looking forward to continuing our links with Marden Church and Marden Library. We have already arranged for each class to visit the library to help promote a love of reading. Last academic year, we were lucky enough to be visited by lots of members of our local community who shared their careers with the children.

We are very keen to try to do this again this year. If you would be interested in coming in to share your job and the skills involved please contact the school office:

office@mardenprimaryacademy.org.uk

Safe Anaesthesia Worldwide (SAWW) – Carol Newman, Secretary

Safe Anaesthesia Worldwide (SAWW) is a local charity with an international reach that works to improve anaesthesia services in low-income countries. Worldwide 5 billion people lack access to safe anaesthesia and surgery. As a result, millions suffer disability or death.

We owe a huge Thank You to the team from Marden Medical Practice who participated in the Dragon Boat Race at Bewl Water on 31st August. They bravely battled the elements to complete 3 tough, cold, wet races and their stupendous effort raised £2,300 for SAWW. This money will supply equipment to Suhul Hospital, one of the few hospitals in the war-torn Tigray region of Ethiopia that is still able to perform surgery. Thank you to the rowers, supporters, tea makers and all those who donated to achieve this fantastic result.



You don't have to enter a race or run a marathon to help raise funds for SAWW. You might have a clear out and sell your unwanted items on eBay, Facebook Marketplace, at a car boot or garage sale, and donate the proceeds to SAWW. To learn more please visit our website www.safe4all.org.uk. Thank you.

Marden Village Club

Louise Hickmott

We are delighted to announce that Marden Village Club has been named Kent CAMRA Club of the Year for 2024, putting us within the top 16 Clubs in the Country. Thank you to Simon, our club manager, to all our wonderful staff and committee, and to our members on making the club a fantastic place to work and socialise. The Club raised over £10,000 for charity in the first half of 2024, donating £5,000 to both Chalkdown RDA and Dandelion Time, our charities for 2024, as well as donations to Safe Anaesthesia Worldwide and MacMillan in support of our club members raising money for both charities. The Club will be co-hosting a charity quiz with Chalkdown RDA on Saturday 16th November, raising additional funds for this fantastic charity. If you wish to attend, please follow us on Instagram or Facebook to keep up to date with this event, or alternatively email office@mardenvillageclub.co.uk for more details. If you are interested in joining our club, please do pop in during our opening hours to pick up an application form.

OTHER PARISH INFORMATION CONTD

Marden Parish Church – Rev. Nicky

Services - 8.00am Holy Communion (traditional language) and 10.30am services alternate between Morning Worship on the 1st and 3rd Sunday's and Parish Communion on the 2nd and 4th. The church is also open each day, for visitors and anyone who would like to spend some time in reflection or prayer. Midweek Communion is every Thursday at 9.15am. Check out the Church website:

www.mardenchurch.org.uk and Facebook page @churchinmarden for our up-to-date services and events. To receive our weekly news sheet, please email office@mardenchurch.org.uk.

Messy Church is for all ages and explores a theme or Bible story through art, craft and activities. We have a short act of worship too and then we have tea. Held in the Vestry Hall next dates: December 8th and January. Sunday Club for primary school age children runs on the Sundays on the 2nd and 4th Sundays of the month.

Little Fishes Baby & Toddler Group

Little Fishes baby and toddler group runs in the Vestry Hall every Wednesday during term time between 9.30am-11am. All parents and carers are welcome to go along with their little ones. There is no need to book just turn up as and when you are able to. Suggested donation for each session is £1.

For more information, please contact Kathy: office@mardenchurch.org.uk or Rev Nicky: rev.nicky@gmail.com



Weddings At Marden Church

We enjoy celebrating with you the happy occasion of a Wedding. Congratulations if you have just got engaged or are planning your wedding. If you are looking for a place to get married, please do consider Marden Church. We are happy to work with you to provide the service you would like – an intimate service or large celebration – and there are many options! Please do contact Rev Nicky at the Vicarage on 01622 831379 or rev.nickyharvey@gmail.com to answer your questions or plan your wedding service.

If you would like to contact Rev'd Nicky about Baptism, Marriage, Blessing or arranging a funeral (we are happy to take services at the Crematorium as well as the church) please contact: 01622 831379 or rev.nickyharvey@gmail.com

The Little Marden Farm Shop and Country Store

It was such a shame to see the closure of the well-stocked Farm Shop that Adele and Helen ran over the last couple of years.

Good luck in your new adventures ladies and thank you for helping to provide residents with lots of lovely goodies – you will be missed. At the time of writing, we understand that the Farm Shop has been sold but have no further details of what will happen with the listed building in the future.

WHAT'S GOING ON IN MARDEN

A very warm welcome to all new residents who have recently moved to the village, and you can find our Village Welcome Pack on our website: <https://bit.ly/VillageWelcomePack> We are very lucky to have so much going on in our lovely village – true community spirit. There are so many village groups who frequently interconnect/support one another. For example, Marden Parish Church and Marden Village Club held a Marden Apple Festival in September to raise money for Marden Church, Marden History Group, Dandelion Time and Chalkdown RDA – such a wonderful initiative.

In the Summer we were entertained by Marden Theatre Group's very successful performance of 'Sister Act' and their 50th Anniversary Murder Mystery event, the annual Saints-v-Sinners cricket match in July, Hazlitt Theatre's Summer Touring Show in Southons Field with a performance of 'The Three Musketeers, Sunday Cream Teas at the Vicarage in August, our wonderful Medical Centre raised money for the

Safe Anaesthesia charity by participating in the Dragon Boat Festival at Bewl Water in August, 'Art in the Garden' at Mill Farm House, the Marden Apple Festival in the Village Club in September and Marden in Bloom's Heroes & Villains Scarecrow Safari in October. Here's a taste of what's happening this Winter.

Marden at Christmas Saturday 7th December

Our much-loved community celebration is back, and you can find all the details on the back of this newsletter. There are a few spare stalls to fill at the Craft Fayre in the Memorial Hall, so if you would like to book one, please email Lisa at: adminassistant@mardenkent-pc.gov.uk

Weald of Kent Young Farmers Club Tractor Parade – Sunday 22nd December – Claire Eckley

Great news that The Weald of Kent Young Farmers Club are planning to hold another tractor parade this Christmas on Sunday 22nd December. It will run from 5pm to 7pm passing through Goudhurst, Cranbrook, Staplehurst and they should be approaching Marden Thorn around 6.30pm and proceeding down Thorn Road, Albion Road, High Street then Goudhurst Road. You can check out their website on:

<https://bit.ly/WealdTractorRun>



WHAT'S GOING ON IN MARDEN CONTD

Weald of Kent Young Farmers Club Contd

They are finalists in the Community Spirit category at the National YFC Achiever Awards on November 2nd for their achievements in the Xmas tree recycle, the big farming quiz and helping at events such as the ploughing match, the Weald of Kent Steam Fair, the county show and Paddock Wood Carnival, but mainly for the exemplary tractor parade. See here: <https://bit.ly/WealdofKentFinalists>

VE Day 80 – Thursday 8th May 2025 – Date for your Diary!

On Thursday 8th May the Beacon in Southons Field will be lit once again to commemorate VE Day 80 at 9.30pm. The Parish Council will keep the event simple, like the D-Day 80 on 6th June this year, with some music etc. Watch out for details nearer the time.

K20 Cycling Club – Del Leslie

After forming in July 2020 with just eleven members, we now boast 167! From the outset we were keen to be part of the local community rather than just using Marden as a place to ride out from. To this end we put a lot of work into supporting local charities. Since our formation, through annual donations and money raised from our very successful annual charity cycling sportive, we have been able to share the princely sum of £9,700 between Marden Scout Group and Marden Dementia Friendly Community.

We pride ourselves in being a very friendly, inclusive club with a range of cycling groups for all levels of confidence and ability. New to cycling or have low confidence? We can help you. Our “Sofa to Saddle” course, based in Marden, includes gentle rides in a group of similar ability along carefully selected routes, led by our experienced Ride Leaders. It’s a fun, social opportunity, open to anyone who wants to go further or build their confidence on a bike.

Whatever your ability why not look at our website:

<https://k20cyclingclub.org/>



Marden Bowls Club

Colin Smith, Secretary

It has been a busy season at the club. In all honesty we are a small bowls club and need new people to join us to take up this great game of ours. We only have around 40 members who are committed to play on a regular basis. Ideally, we need those who have some spare time to play throughout the relatively short period between April and September who would like to stay active and like meeting new people?

You do not need experience as we can help and coach you to be able to take part in our various games we have planned? Please get in contact with Colin Smith the Secretary if interested: mardensecretary24@gmail.com

As regards to our season's activities, we have had a good year with two of the bowlers reaching the Quarter Finals of the Kent County Pairs Competition, a fine effort given the County has over 160 bowls clubs! We won the Maidstone & District Friday Night Triples 1st Division and also successfully won the M&D 4's League. Our bowlers won the M&D Pairs & 4's Knockout Competition held at Marden early in September. We have also played many local clubs in friendlies and had a good success rate!

Our Short Mat Bowls starts in Mid-September in our Pavilion and runs during three afternoons in the week. If you are interested please get in touch.

Marden Cricket, Hockey & Tennis Club

Padel has come to Marden! We've been seeing lots of people from 5 to over 80 years old on our two brand new Padel courts since they were opened earlier in the year by Debbie Jevans, the first female chair of Wimbledon & the All England Tennis Club. It's the UK's (world's?) fastest growing sport and a mix between tennis and squash. Importantly it's easy to play (you serve underarm which is a big help!) and you don't have to be fit to play it!

At Marden Padel Club we've introduced sessions for total beginners and those that may have played a few times on holiday. We're now starting to introduce dedicated sessions for Social Mixed Padel, Ladies Padel, Improvers

and Intermediate and Advanced levels with a more competitive edge. More competitions are in the pipeline and specialist coaching is available.

Why not come along and have a go, or come and see what it's all about and have a coffee or drink on the balcony overlooking the courts? You can download the Marden Sports Club app and register as a temporary member and you're ready to book a court and play. Rackets are available for hire, but you have to buy balls - only £5 for a sleeve of 3. Website:

www.mardensportsclub.com/padel

Marden Horticultural Society (MHS)

Julie Nicol, Chair

MHS has continued with its full itinerary of guest speakers. Trips out to wonderful gardens both large and small such as Kew and Wisley, cream teas, summer social, competitions throughout the year with trophy and prizes. A lovely trip to Chambers cut flower nursery in Marden - a hidden little gem. Our highlight of the year was our plant sale which was extremely popular in the village, and many gardens benefitted from the bedding plants sold.

Any new residents to Marden who love gardens will receive a warm welcome at our monthly meetings and can see our events on the website Marden Gardeners. For more information please check out:

<https://www.mardengardeners.uk> or email: info@mardengardeners.uk

WHAT'S GOING ON IN MARDEN CONTD

Marden in Bloom

Anne Boswell, Chair

We hope you've enjoyed the planters around the village which looked lovely in the Summer and thanks to anybody that gave them a drink of water - they certainly brightened up the village. The planters and beds at the Memorial Hall looked magnificent and thanks to those Bloomers who tend and water them so frequently. The Bloomers have now replanted them for winter/spring colour.

The Garden Safari in June was another great success and thanks to those residents who opened their gardens. Thanks also to those of you who bought Spring bulbs at the Bulb Sale in September. The Heroes & Villains Scarecrow Safari took place on the 5th October and it was great seeing residents wandering around the village. Many thanks to all those who entered and congratulations to the winner of the most votes, Stanleys of Marden!



Finally, we will be planting more naturalising bulbs in the village and tidying up the beds at the Library area.

We always welcome new members to our friendly group, so if you would like to give us a hand that would be great - so good to get out into the fresh air and feel you're doing something worthwhile in the community. Please email: anne.boswell@ymail.com for more info or check out our Facebook page.

Marden Oddfellows – Julie Broomfield

Make new friends and join a society that cares! The Oddfellows Society is a small friendly society, which runs every Friday in Maidstone and the 2nd Monday in every month in Marden. Are you looking to bring invaluable laughter into your life, make new friends, chat, learn new activities, crafts, or share your own crafts? We also organise cost effective trips throughout the year which do not break the budget. If you would like further information, call Julie on 07910888607 or check out: <https://www.oddfellows.co.uk/> You never know, it may be the best decision you ever made.

Marden Scout Group – Shout Out for Volunteers - Louise Holborow, Group Administrator

We are a vibrant group at the heart of the village comprising three sections - Beavers (6-8 years), Cubs (8-10½ years) and Scouts (10½ -15 years).

From treasure hunts to tie-dye, camp-outs to canoeing, space exploration to supporting our local community there is always an opportunity to learn something new, gain important life skills and, above all, to have fun!

To continue to provide these amazing opportunities we are looking for volunteers to support us. Could you spare a few hours a week as an activity volunteer for the Beavers or Cubs? You will receive training, access to online resources to plan activities and be supported by an established leader. If working directly with children is not your thing, we are also looking for a Chairman and new Trustees to join our board and help ensure the smooth-running of the group behind the scenes.

If you would like more information about joining or volunteering, please contact gsl@mardenscouts.org.uk or join us at these upcoming events for a chat:

- Remembrance Sunday Parade on 10th November at 10:45 at the church
- Marden at Christmas on 7th December
- Santa Sleigh in December from which donations will help support the Marden Food Bank

We are looking for volunteers to continue these fabulous experiences for the young people of our community – giving them the skills to succeed in life.

If you are interested in a rewarding chair, section volunteer or general support role contact: gsl@mardenscouts.org.uk for more information.

Marden Society – Steve McCarragher

We enjoyed a very successful summer outing to Cobham Hall in July on a lovely summer's day. Cobham Hall has been owned since 1208 by three dynasties, the Cobhams, Lennoxes and Darnleys.

Our programme of talks in autumn 2024 will continue as follows:

- 27th November: A Magic Lantern Tour of Kent by Gerald Cramp. This will cover an introduction to magic lanterns including the one to be used later in the presentation, a short guide to Kent in the 19th century and the showing of original glass slides.
- On 22nd January 2025 we will hold our usual AGM and social evening, and on February 26th a talk by Melanie Gibson-Barton on "Eva Braun – victim or Contriver?"

All our talks start at 7.30pm in the Vestry Hall and are free and open to all, with a raffle and refreshments served after the talk. We only ask that you buy at least one raffle ticket!

For further information contact Steve: steve.mccarragher@btinternet.com or 07946 532591.

**Marden Sporting Memories –
Tuesdays 2.30pm-4pm – Marden
Cricket & Hockey Club, Maidstone
Road**

Marden Sporting Memories is a weekly group where adults meet to talk and reminisce about past sporting occasions and catch up on the weekly sports events. The group have a wide range of visitors who share their 'Sporting Memories' and since the last newsletter Jamie Spence, the former European Tour golfer came for the afternoon, you can read more about his visit here:

<https://bit.ly/MemoriesGolfClass>

The club enjoyed ice creams whilst supporting the Kent over 60's Cricket and in August some of the group travelled to Canterbury on the train to watch Kent v Durham, with tickets supplied by the Kent Cricket Community Trust. Catching up on the weekly sporting news over the summer was a busy time with the Euros, Cricket, Golf, Olympics and Para Olympics. Most of the fun was had with the indoor crossbow, not sure how safe anyone was in the club that day, but lots of laughter and a competitive spirit as always!

The group had an 'away fixture' in October – a coach trip to Tunbridge Wells to see the world cup Subbuteo exhibition which will certainly bring back some sporting memories. Please contact Sue Eltringham at mardensportingmemories@gmail.com or call 01622 833053 to register your interest.

**Marden Village Café– Fridays 10am-
11.45am in the Vestry Hall**

Go and enjoy a cup of coffee/tea and fresh homemade cakes. Meet new people for a chat – old and young – at this local community café.

WET Golfers Society

Sue Attwood, Hon Secretary

The WET Golf Society continues to grow its membership numbers. We are a diverse and inclusive mix of golfers and welcome members of any ability. This year we have played at many local courses and so far enjoyed good weather in all but our September fixture at Hever Castle Golf Club, where we dealt with the biblical rain but had to abandon our day when the thunder and lightning started. It didn't dampen spirits and we still enjoyed a fabulous meal at the Unicorn where we imposed fines and ran a couple of charity raffles, raising over £260 for Macmillan. This amount will have been topped up considerably by our Coffee Morning on 21st September. Thank you to everyone who has supported us in our fundraising endeavours, from individuals to local companies, we are grateful for your support.

We involve members' partners in our dinners and social events and together we have a lot of fun. Aside from the golf days our members often get together to play in 4-balls. A larger group spent a few days in September playing the courses in Le Touquet. This is now an annual event. Contact wetgolfers@gmail.com for further information or call Sue on 07884361725.

PARISH COUNCIL COUNCILLORS, CLERKS AND OTHER USEFUL NUMBERS

CHAIRMAN

Cllr Kate Tippen

cllrtippen@mardenkent-pc.gov.uk

Tel: 01622 832305

VICE CHAIRMAN

Cllr Theresa Gibson

cllrgibson@mardenkent-pc.gov.uk

Tel: 01622 832305

PLANNING CHAIRMAN

Cllr Andy Turner

cllrturner@mardenkent-pc.gov.uk

Tel: 07803 598813

AMENITIES CHAIRMAN

Cllr Anne Boswell

cllrboswell@mardenkent-pc.gov.uk

Tel: 07808 868703

PARISH COUNCILLORS

Cllr Richard Adam

cllradam@mardenkent-pc.gov.uk

Tel: 01622 831673

Cllr Ian Newton

cllrnewton@mardenkent-pc.gov.uk

Tel: 01622 831832

Cllr Adrian Rabot

cllrrabot@mardenkent-pc.gov.uk

Tel: 01622 832305

Cllr Mike Summersgill

cllrsummersgill@mardenkent-pc.gov.uk

Tel: 01622 832305

Cllrs Paul Dobinson

cllrdobinson@mardenkent-pc.gov.uk

Tel: 01622 832305

PARISH CLERK

Alison Hooker

clerk@mardenkent-pc.gov.uk

Tel: 01622 832305

Mobile: 07376 287981

DEPUTY PARISH CLERK

Rachel Weeks

deputyclerk@mardenkent-pc.gov.uk

Tel: 01622 832305

Mobile: 07940 241333

BOROUGH COUNCILLORS

Cllr Grace Couch - 01622 296281

gracecouch@maidstone.gov.uk

Cllr Michael Summersgill - 07779 367412

michaelsummersgill@maidstone.gov.uk

Cllr Claudine Russell

claudinerussell@maidstone.gov.uk

COUNTY COUNCILLOR

Lottie Parfitt - 07919 360000

lottie.parfitt@kent.gov.uk

MEMBER OF PARLIAMENT

Katie Lam MP

Member of Parliament for Weald of Kent

House of Commons, London, SW1A 0AA

katie.lam.mp@parliament.uk/www.katieforkent.com

KENT POLICE

Emergency: 999

Telephone: 101

<https://bit.ly/KPReportACrime>

<https://bit.ly/KPRuralCrime>

BRITISH TRANSPORT POLICE

Freephone: 0800 405040

Text: 61016

FAULT REPORTING

Maidstone Borough Council

(for Flytipping, Abandoned Vehicles, Dog Fouling and

Street Cleaning

Telephone: 01622 602162

Website: [www.maidstone.gov.uk/home/do-it-](http://www.maidstone.gov.uk/home/do-it-online/report-it)

[online/report-it](http://www.maidstone.gov.uk/home/do-it-online/report-it)

Kent County Council

(for Potholes, other Road Issues, Vegetation and Street

Lighting)

Telephone: 08458 247800

Website: www.kent.gov.uk

ADMIN ASSISTANT

Lisa Stevens

adminassistant@mardenkent-pc.gov.uk

Tel: 01622 832305



@MardenParishCouncil



@mardenkentpc



@mardenparishcouncil



Marden at Christmas

SATURDAY 7TH DECEMBER 2024

**10.30AM AT THE ALLENS
CAROLS AND MINCE PIES**

**SHOPS, BUSINESSES AND
CHURCH TAKING PART**

**12.00-3.30PM MEMORIAL HALL
CRAFT FAIR AND SANTA IN HIS GROTTTO**

